

JAWWAR

CATALOG 2021



Chimney systems
Steel chimneys



made in Poland

Modern chimney systems and chimneys

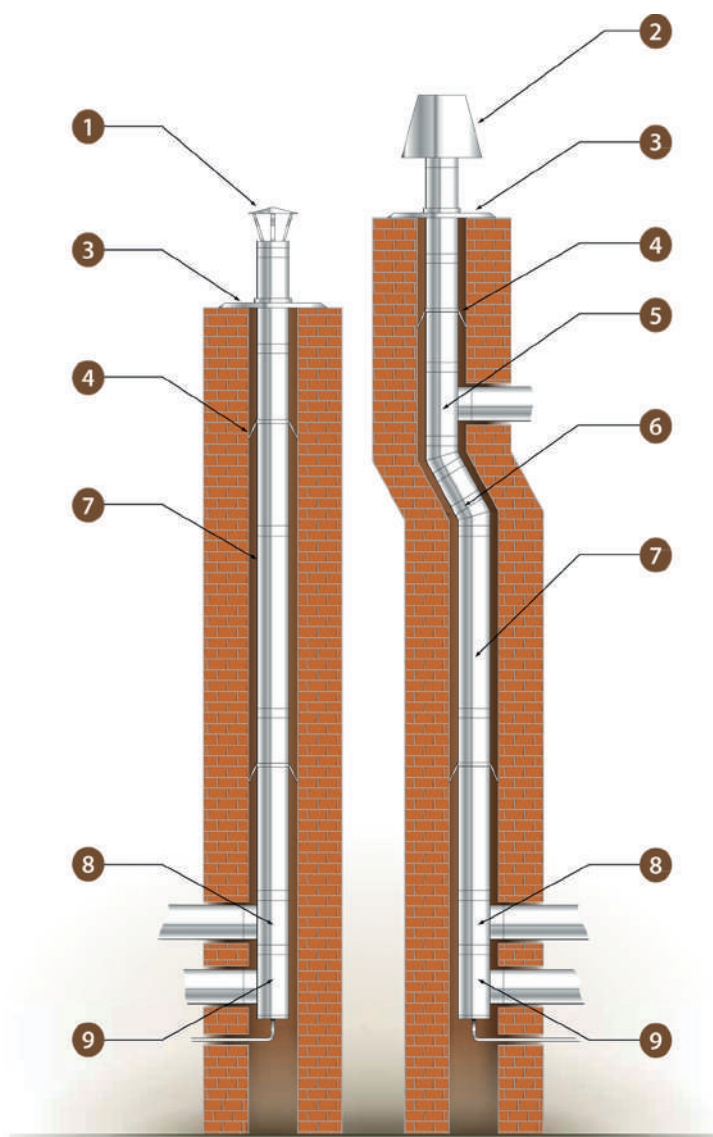
Table of Contents

▶ Chimney liners	02
▶ Oval chimney liners	10
▶ Insulated chimneys	15
▶ Air-flue gas system	24
▶ Condensing chimney liners	25
▶ Turbo System	27
▶ Flexible chimney liners	30
▶ Jawar Smooth	32
▶ Jawar Aero	36

Chimney liners

Jawar Steel Chimneys liners protects brick chimneys against destructive condensate action. It's easy to install and highly recommended to use them also in new and already existing buildings. Thin walls (0.5 mm – 1.0 mm) cause faster calefaction – up to 200 times faster than traditional, brick chimney.

Examples of typical chimney installations



- Much smaller flow resistance of exhaust fumes than in traditional brick chimneys, because of less rough surface.
- Steel chimney liners allow to modernize and upgrade old chimneys up to new work conditions.
- Wide range of elements and diameters in offer.
- Easy and quick montage thanks to coupler (muff) edge of pipe.
- Small thermal capacity.
- High tightness.

JAWAR W

- Working temperature up to 450 C
- Dry and wet working
- Gas, oil, wood, coal
- Vacuum pressure working
- Material: 1,4404 (316L)
- Coupler (muff) pipe connection

JAWAR WŻ

- Working temperature up to 600 C
- Dry working
- Wood, coal
- Vacuum pressure working
- Material: 1,4828 (309)
- Coupler (muff) pipe connection

1 Rain Cap (Parasol)

2 Injector Cap

3 Roof Cover

4 Stabilizer Band

5 T-Pipe with Inspection

6 Elbow

7 Pipe

8 T-Pipe

9 Inspection element / Cleanout

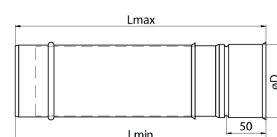
Chimney liners

Elements made of steel: acid-proof – material type 1.4404 (316L, thickness: 0.5 mm, 0.6 mm and 1.0 mm); heat-proof – material type 1.4828 (309, thickness: 0.8 mm).



Telescope WTE

øD [mm]	80	100	110	120	130	140	150	160	180	200	225	250	300
L min [mm]	320	320	320	320	320	320	320	320	320	320	320	320	320
L max [mm]	520	520	520	520	520	520	520	520	520	520	520	520	520



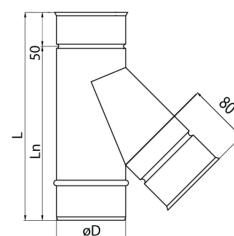
Price

WTE	0,5-0,6	18,15	19,05	20,23	21,08	22,81	23,96	26,85	27,43	32,05	38,69	44,18	49,08	60,92
WTEK	1,0	-	-	39,32	41,19	43,91	46,20	51,96	52,93	61,70	74,49	85,25	94,49	117,28
WTEŻ	0,8	-	31,44	33,35	34,78	37,64	39,54	44,31	45,37	52,84	63,84	72,89	80,98	100,51



T-pipe 45° WT 45, WTK45, WTŻ45

øD [mm]	80	100	110	120	130	140	150	160	180	200	225	250	300
L min [mm]	333	500	500	500	500	500	500	500	500	500	600	600	700
L max [mm]	520	450	450	450	450	450	450	450	450	450	450	550	650



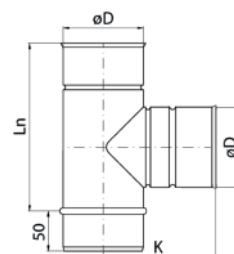
Price

WT 45	0,5-0,6	23,67	25,98	27,43	27,43	29,45	31,47	34,07	36,38	42,73	52,26	58,03	65,25	79,69
WTK 45	1,0	-	-	53,13	56,30	57,75	59,48	62,37	73,63	92,40	99,04	115,78	125,02	145,53
WTŻ 45	0,8	-	41,00	44,17	47,06	48,22	49,66	51,97	61,21	72,18	82,58	96,44	104,23	121,27



T-pipe 90° WT 90, WTK90, WTŻ90

øD [mm]	80	100	110	120	130	140	150	160	180	200	225	250	300
L [mm]	200	200	200	200	200	283	283	283	283	283	450	450	450
Ln [mm]	191	200	205	210	215	220	225	230	240	250	263	275	300
K [mm]	140	200	205	210	215	220	225	230	240	250	260	275	300



Price

WT 90	0,5-0,6	22,81	23,67	25,12	26,56	27,72	30,89	32,91	41,86	47,64	52,84	63,52	70,74	84,60
WTK 90	1,0	-	-	41,87	44,46	46,20	51,68	55,44	70,74	79,69	88,64	99,33	118,38	142,06
WTŻ 90	0,8	-	32,91	34,93	36,96	38,40	43,02	46,20	58,90	66,41	73,92	82,87	98,75	118,38

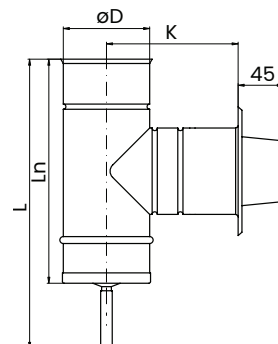
Chimney liners

Elements made of steel: acid-proof – material type 1.4404 (316L, thickness: 0.5 mm, 0.6 mm and 1.0 mm); heat-proof – material type 1.4828 (309, thickness: 0.8 mm).



Cleanout/Inspection element 90° WW90°, WWK90°, WWŻ90°

øD [mm]	80	100	110	120	130	140	150	160	180	200	225	250	300
Ln [mm]	251	251	251	251	251	334	334	334	334	334	501	501	501
L [mm]	339	339	339	339	339	422	422	422	422	422	589	589	589
K [mm]	190	200	205	210	215	220	225	230	240	250	262	275	300



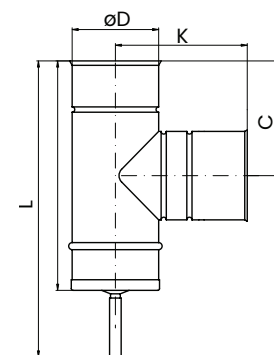
Price

		24,83	25,41	27,14	28,87	29,74	33,49	35,80	45,62	51,39	57,17	68,75	76,51	91,53
WW90	0,5-0,6	-	-	56,92	59,99	64,47	69,79	74,84	79,89	89,69	99,79	112,26	124,74	141,62
WWK 90	1,0	-	41,58	45,73	49,89	54,05	58,21	62,37	66,55	74,84	83,16	93,55	103,95	124,74
WWŻ 90	0,8	-	-	-	-	-	-	-	-	-	-	-	-	-



T-Pipe with inspection unit WTW, WTK, WTWŻ

øD [mm]	80	100	110	120	130	140	150	160	180	200	225	250	300
Ln [mm]	251	251	251	251	251	334	334	334	334	334	501	501	501
L [mm]	300	300	300	300	300	383	383	383	383	383	500	500	500
C [mm]	125	125	125	125	125	166	166	166	166	166	250	250	250
K [mm]	190	200	205	210	215	220	225	230	240	250	262	275	300



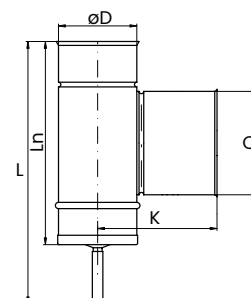
Price

		22,23	22,80	24,54	25,98	26,85	30,03	32,34	39,77	46,20	51,39	61,749	69,01	82,29
WW90	0,5-0,6	-	-	52,80	54,17	55,68	60,06	64,68	82,00	92,40	102,79	121,55	138,02	164,58
WWK 90	1,0	-	41,05	44,27	49,89	54,05	58,21	62,37	66,52	74,84	83,16	111,23	124,49	148,00
WWŻ 90	0,8	-	-	-	-	-	-	-	-	-	-	-	-	-



Oval Cleanout WWO, WWOK, WWOŻ

øD [mm]	-	100	110	120	130	140	150	160	180	200	225	250	300
Ln [mm]	-	251	251	251	251	334	334	334	334	334	501	501	501
L [mm]	-	339	339	339	339	422	422	422	422	422	422	422	422
C [mm]	-	180	180	180	180	180	180	180	180	180	180	180	180
K [mm]	-	200	205	210	215	220	225	230	240	250	262	275	300



Price

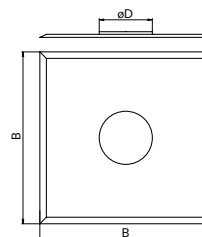
		-	25,98	27,36	28,43	30,30	31,62	33,26	44,84	51,97	57,75	63,52	66,00	96,52
WW90	0,5-0,6	-	-	41,31	42,93	45,76	47,75	50,29	67,73	79,00	87,20	95,95	99,66	145,75
WWK 90	1,0	-	36,38	38,91	39,87	43,89	44,27	46,58	63,85	68,07	80,85	88,93	92,40	135,13
WWŻ 90	0,8	-	-	-	-	-	-	-	-	-	-	-	-	-

Chimney liners

Elements made of steel: acid-proof – material type 1.4404 (316L, thickness: 0.5 mm, 0.6 mm and 1.0 mm); heat-proof – material type 1.4828 (309, thickness: 0.8 mm).



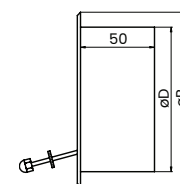
Roof Cover WBK													
ØD [mm]	80	100	110	120	130	140	150	160	180	200	225	250	300
B [mm]	333	333	333	333	333	333	360	360	400	400	500	500	500



Price														
WBK	0,5-0,6	11,55	11,55	11,55	11,55	12,12	13,28	14,43	17,93	20,79	23,10	27,72	30,60	36,66



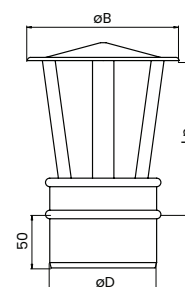
Draught Controller WRC			
ØD [mm]	130		200
B [mm]	160		230



Price							
WRC	0,5-0,6	40,42		46,20		54,86	



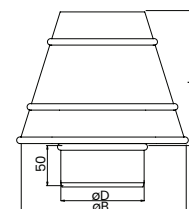
Chimney Rain Cap (Parasol) WDP, WDPK, WDPŻ													
ØD [mm]	80	100	110	120	130	140	150	160	180	200	225	250	300
Φ B [mm]	190	190	190	230	230	230	270	270	350	400	450	500	600
L n [mm]	145	145	145	145	165	185	185	215	215	235	235	255	275



Price														
WDP	0,5-0,6	11,55	12,12	12,70	13,28	13,86	15,59	16,50	17,61	19,96	22,00	25,30	30,03	35,22
WDPK	1,0	-	-	21,97	22,23	23,10	26,27	27,72	29,45	32,63	38,69	44,75	47,06	54,01
WDPŻ	0,8	-	18,48	18,48	18,48	19,34	21,94	23,10	24,54	27,14	32,34	38,67	39,27	46,17



Chimney injector Cap WDI, WDIK, WDIŻ													
ØD [mm]	80	100	110	120	130	140	150	160	180	200	225	250	300
Φ B [mm]	162	198	218	238	258	278	298	318	358	398	448	498	598
L n [mm]	123	150	165	180	195	210	225	240	270	300	337	375	450



Price														
WDI	0,5-0,6	30,36	31,18	33,66	36,09	40,13	41,87	45,62	56,59	66,12	75,94	85,47	99,90	115,78
WDIK	1,0	-	-	50,82	51,97	57,75	63,22	65,83	81,42	95,28	109,43	129,05	150,86	174,84
WDIŻ	0,8	-	40,86	44,11	47,30	48,22	52,66	54,86	67,85	79,40	91,24	111,98	130,87	151,69

Chimney liners

Elements made of steel: acid-proof – material type 1.4404 (316L, thickness: 0.5 mm, 0.6 mm and 1.0 mm); heat-proof – material type 1.4828 (309, thickness: 0.8 mm).

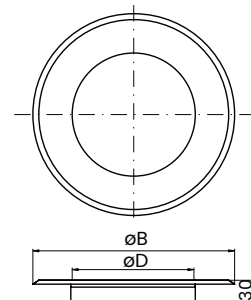


Cover Cap WRM

ØD [mm]	80	100	110	120	130	140	150	160	180	200	225	250	300
Φ B [mm]	230	250	260	270	280	290	300	310	330	350	375	400	500

Price

WRM	0,5-0,6	9,24	11,55	11,55	11,84	12,70	13,57	14,15	14,72	16,17	17,32	18,19	19,40	23,67
-----	---------	------	-------	-------	-------	-------	-------	-------	-------	-------	-------	-------	-------	-------

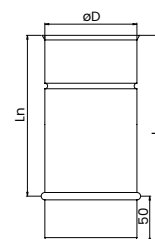


Pipe WR, WRK, WRŻ 1,0/0,5/0,25

ØD [mm]	80	100	110	120	130	140	150	160	180	200	225	250	300
L=100 [mm]	950												
L=500 [mm]	450												
L=250 [mm]	200												

Price

WR1000	0,5-0,6	19,63	19,52	20,79	12,54	23,37	25,69	27,43	34,93	39,55	43,89	52,84	58,90	70,45
WR500	0,5-0,6	14,43	14,72	15,59	16,45	17,32	19,34	20,79	26,27	29,74	32,91	39,84	44,17	52,84
WR250	0,5-0,6	9,52	9,81	10,39	10,39	11,26	12,99	13,86	17,61	19,92	21,94	26,27	29,45	35,22
WRK1000	1,0	29,74	-	-	32,91	34,36	38,69	41,29	52,55	51,48	66,12	79,40	88,35	105,97
WRK500	1,0	-	-	23,38	24,83	25,98	28,87	30,95	39,27	44,46	49,66	59,48	66,12	79,40
WRK250	1,0	18,19	-	15,88	15,88	16,74	19,34	20,79	26,27	29,74	33,20	39,55	44,17	53,13
WRŻ1000	0,8	-	27,43	29,16	32,91	34,93	36,09	36,85	51,97	55,44	61,50	74,20	82,29	98,75
WRŻ500	0,8	-	17,32	18,19	-	20,50	24,25	25,85	32,34	36,67	39,84	44,46	53,70	68,47
WRŻ250	0,8	-	13,86	14,72	15,59	16,17	18,19	19,34	24,54	25,98	30,89	34,65	41,29	45,91

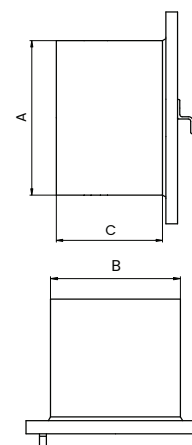


Cleanout/Inspection Doors WDW

ØD [mm]	80	100	110	120	130	140	150	160	180	200	225	250	300
A [mm]	180												
B [mm]	120												
C [mm]	80												

Price

WDW	0,5-0,6	31,18												
-----	---------	-------	--	--	--	--	--	--	--	--	--	--	--	--



Chimney liners

Elements made of steel: acid-proof – material type 1.4404 (316L, thickness: 0.5 mm, 0.6 mm and 1.0 mm); heat-proof – material type 1.4828 (309, thickness: 0.8 mm).

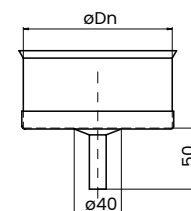


Drain pipe WODS, WODSK, WODSZ

øD [mm]	80	100	110	120	130	140	150	160	180	200	225	250	300
---------	----	-----	-----	-----	-----	-----	-----	-----	-----	-----	-----	-----	-----

Price

		80	100	110	120	130	140	150	160	180	200	225	250	300
WODS	0,5-0,6	12,28	15,00	16,17	17,32	17,90	18,76	20,21	21,36	26,56	28,29	31,76	35,22	45,04
WODSK	1,0	-	-	25,87	27,72	29,16	70,11	32,91	34,65	40,70	45,91	50,87	56,37	75,43
WODSZ	0,8	-	21,03	25,38	24,25	24,75	25,30	26,13	27,62	34,15	36,53	42,90	49,33	63,06

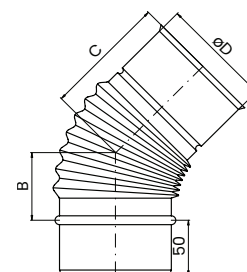


Bended Elbow 45° WK45°G, WKK45°G, WKZ45°G

øD [mm]	80	100	110	120	130	140	150	160	180	200	225	250	300
B [mm]	50	70	75	80	90	95	110	135	140	150	-	-	-
C [mm]	100	120	125	130	140	145	160	185	190	200	-	-	-

Price

		80	100	110	120	130	140	150	160	180	200	225	250	300
WK45G	0,5-0,6	-	18,48	18,76	19,92	23,67	24,54	24,83	31,47	35,80	39,27	-	-	-
WKZ45G	0,8	-	24,53	25,63	26,67	31,24	33,66	36,02	40,42	46,20	49,08	-	-	-

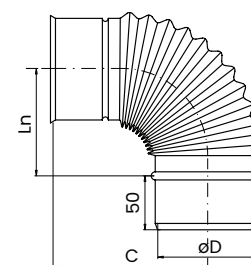


Bended Elbow 90° WK90°G, WKK90°G, WKZ90°G

øD [mm]	80	100	110	120	130	140	150	160	180	200	225	250	300
B [mm]	125	155	172	185	190	195	205	220	225	230	-	-	-
C [mm]	70	100	117	130	135	140	150	165	170	175	-	-	-

Price

		80	100	110	120	130	140	150	160	180	200	225	250	300
WK90G	0,5-0,6	23,38	23,96	25,41	26,85	28,00	30,60	33,49	42,73	48,21	53,70	-	-	-
WKZ90G	0,8	-	32,91	34,93	36,96	38,40	40,42	46,20	49,08	51,97	57,75	-	-	-



Chimney liners

Elements made of steel: acid-proof – material type 1.4404 (316L, thickness: 0.5 mm, 0.6 mm and 1.0 mm); heat-proof – material type 1.4828 (309, thickness: 0.8 mm).

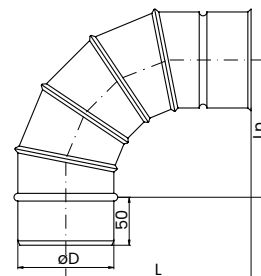


Segment Elbow 0°-90° WKN

ØD [mm]	80	100	110	120	130	140	150	160	180	200	225	250	300
L1 [mm]	-	165	170	175	180	185	190	195	205	215	228	240	-
L2 [mm]	-	215	220	225	230	235	240	245	255	265	278	290	-

Price

WKN	0,5-0,6	-	25,81	28,29	29,74	31,18	34,65	37,24	47,35	53,13	59,48	71,61	79,69	-
-----	---------	---	-------	-------	-------	-------	-------	-------	-------	-------	-------	-------	-------	---

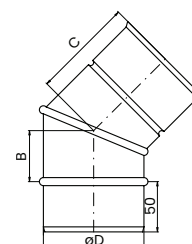


Segment Elbow 45° WK45S, WKK45S, WKZ45S

ØD [mm]	80	100	110	120	130	140	150	160	180	200	225	250	300
L1 [mm]	-	-	-	-	-	-	135	145	150	155	160	170	185
L2 [mm]	-	-	-	-	-	-	185	195	200	205	210	220	235

Price

WK45S	0,5-0,6	15,75	-	-	-	-	-	24,83	31,47	35,80	39,23	47,60	52,88	63,46
WKK45S	1,0	-	-	-	-	-	-	42,21	47,35	53,36	58,85	71,40	79,32	95,19
WKZ45S	0,8	-	-	-	-	-	-	36,02	40,42	46,20	49,08	57,75	66,41	80,78

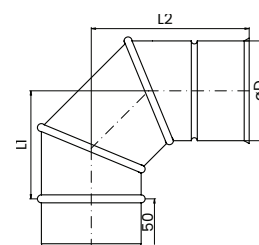


Segment Elbow 90° WK90S, WKK90S, WKZ90S

ØD [mm]	80	100	110	120	130	140	150	160	180	200	225	250	300
L1 [mm]	-	-	-	-	-	-	175	200	210	220	230	245	270
L2 [mm]	-	-	-	-	-	-	225	250	260	270	280	295	320

Price

WK90S	0,5-0,6	-	-	-	-	-	-	33,04	42,73	48,21	53,76	64,53	71,66	86,02
WKK90S	1,0	-	-	-	-	-	-	35,55	63,95	72,33	80,42	96,80	107,52	128,89
WKZ90S	0,8	-	-	-	-	-	-	46,20	49,08	51,97	57,75	72,18	89,51	115,83

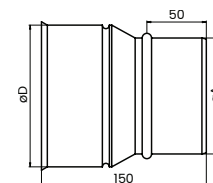


Chimney liners

Elements made of steel: acid-proof – material type 1.4404 (316L, thickness: 0.5 mm, 0.6 mm and 1.0 mm); heat-proof – material type 1.4828 (309, thickness: 0.8 mm).



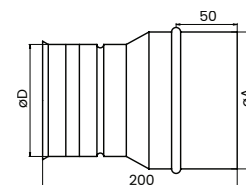
Adapter WRZ, WRZK, WRZŻ													
øD [mm]	80	100	110	120	130	140	150	160	180	200	225	250	300
ø A [mm]	-	90	-	110	120	130	140	150	170	190	-	-	-
	-	80	-	100	110	120	130	140	160	180	-	-	-



		Price								
		80/100	100/120	110/130	120/140	130/150	140/160	150/170	160/180	180/200
WRZ	0,5-0,6	20,21	18,76	18,76	20,21	20,79	21,07	21,36	21,94	26,89
WRZK	1,0	-	-	33,79	39,20	40,42	50,82	52,25	54,35	55,79
WRZŻ	0,8	-	30,03	30,82	38,61	39,50	44,27	46,47	47,71	51,26



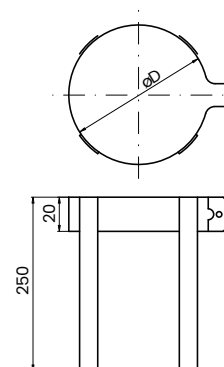
Reverse Adapter WRO, WROK, WROŻ													
øD [mm]	80	100	110	120	130	140	150	160	180	200	225	250	300
ø A [mm]	90	110	120	130	140	150	160	170	190	-	-	-	-
	100	120	130	140	150	160	170	180	200	-	-	-	-



		Price								
		80/100	100/120	110/130	120/140	130/150	140/160	150/170	160/180	180/200
WRO	0,5-0,6	20,21	18,76	20,21	20,21	21,65	21,65	24,14	28,87	30,31
WROK	1,0	-	-	36,43	40,01	53,46	54,69	54,69	55,55	57,06
WROŻ	0,8	-	30,82	34,51	39,10	41,28	45,51	47,30	49,77	52,49



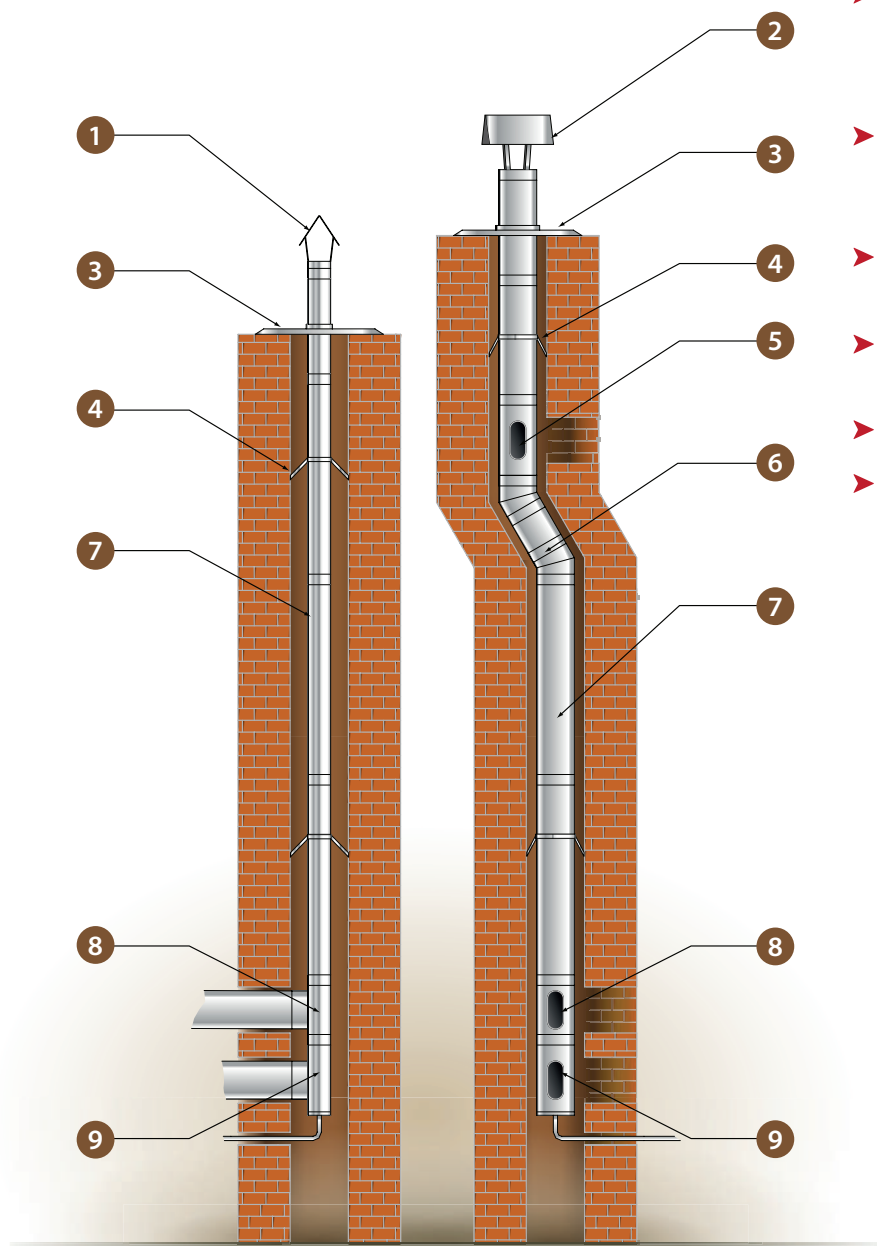
Stabilizer WSN													
øD [mm]	80	100	110	120	130	140	150	160	180	200	225	250	300
Price	-	5,50	6,05	6,32	6,32	6,60	6,87	7,50	7,70	7,97	8,66	9,35	9,90



Oval chimney liners

Oval chimney liners are intended to work in sub-pressure. Thank to coupler (muff) connection of pipes, oval liners are easy and quick to mount. This inserts do not exhibit any tendency to twist and soot accumulation. Oval flues use maximum area of existing chimney channel. Diameters of standard products: 100x200 mm, 110x230 mm, 120x240 mm, but that is only a part of our production possibilities.

Examples of typical chimney installations



- Much smaller flow resistance of exhaust fumes than in traditional brick chimneys, because of less rough surface.
- Oval chimney liners allow to modernize and upgrade old chimneys up to new work conditions.
- Wide range of elements and diameters in offer.
- Easy and quick montage thanks to coupler (muff) edge of pipe.
- Small thermal capacity.
- High tightness.

JAWAR O

- Working temperature up to 600 C
- Dry and wet working
- Gas, oil, wood, coal
- Vacuum pressure working
- Material: 1,4404 (316L)
- Coupler (muff) pipe connection

JAWAR OŹ

- Working temperature up to 600 C
- Dry working
- Wood, coal
- Vacuum pressure working
- Material: 1,4828 (309)
- Coupler (muff) pipe connection

- 1 Rain Cap (Parasol)
- 2 Injector Cap
- 3 Roof Cover

- 4 Stabilizer Band
- 5 T-Pipe with Inspection
- 6 Elbow

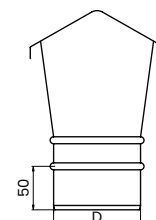
- 7 Pipe
- 8 T-Pipe
- 9 Inspection element / Cleanout

Oval chimney liners

Elements made of steel: acid-proof – material type 1.4404 (316L, thickness: 0.5 mm, 0.6 mm and 1.0 mm); heat-proof – material type 1.4828 (309, thickness: 0.8 mm).

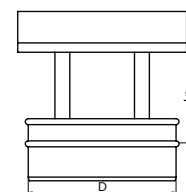


Rain Cap "Parasol" ODP, ODPK, ODPŻ			
OWAL	100x200	110x230	120x240
D [mm]	100	110	120
C [mm]	200	230	240
ØLn [mm]	144	144	144

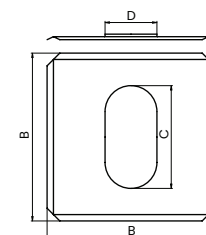


Price

ODP	0,5-0,6	22,80	27,14	33,49
ODPK	1,0	41,58	57,02	61,18
ODPŻ	0,8	29,81	33,56	34,48



Roof Cover OBK			
OWAL	100x200	110x230	120x240
B [mm]	333	333	333
C [mm]	200	230	240
D [mm]	100	110	120

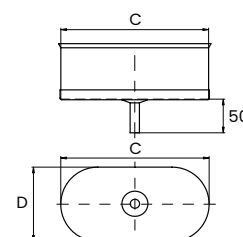


Price

OBK	0,5-0,6	21,65	21,65	21,65
-----	---------	-------	-------	-------

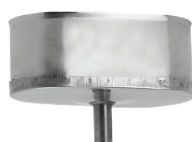
Drain pipe OODS, OODSK, OODSŻ

OWAL	100x200	110x230	120x240
C [mm]	100	110	120
D [mm]	200	230	240



Price

OODS	0,5-0,6	18,19	20,50	21,65
OODSK	1,0	27,02	30,29	31,18
OODSŻ	0,8	22,57	25,24	26,73

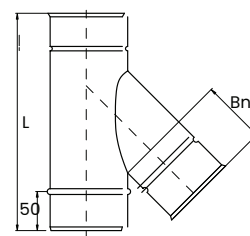
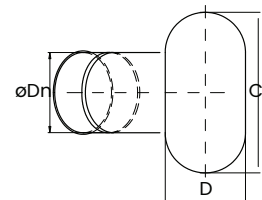


Oval chimney liners

Elements made of steel: acid-proof – material type 1.4404 (316L, thickness: 0.5 mm, 0.6 mm and 1.0 mm); heat-proof – material type 1.4828 (309, thickness: 0.8 mm).



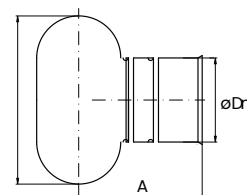
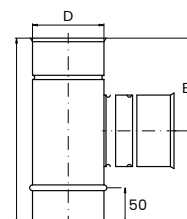
T-Pipe45 OT45, OTK45, OTŻ45			
OWAL	100x200/150	110x230/180	120x240/180
ØD [mm]	150	180	180
D [mm]	100	110	120
C [mm]	200	230	240
L [mm]	500	500	500



Price				
OT45	0,5-0,6	46,20	50,53	55,44
OTK45	1,0	101,64	109,72	114,92
OTŻ45	0,8	86,56	89,22	91,51



T-Pipe 90 OT90, OTK90, OTŻ90			
OWAL	100x200/150	110x230/180	120x240/180
ØD [mm]	150	180	180
D [mm]	100	110	120
C [mm]	200	230	240
A [mm]	200	205	210
B [mm]	166	166	166
L [mm]	333	333	333



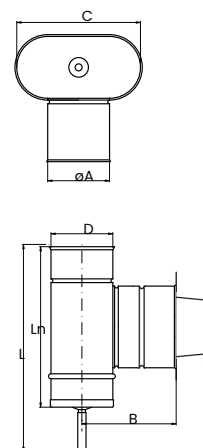
Price				
OT90	0,5-0,6	46,92	47,35	50,24
OTK90	1,0	68,14	71,03	88,05
OTŻ90	0,8	71,89	78,11	86,72

Oval chimney liners

Elements made of steel: acid-proof – material type 1.4404 (316L, thickness: 0.5 mm, 0.6 mm and 1.0 mm); heat-proof – material type 1.4828 (309, thickness: 0.8 mm).



Inspection element OW, OWK, OWŻ			
OWAL	100x200	110x230	120x240
D [mm]	100	110	120
C [mm]	200	230	240
B [mm]	210	205	210
L _n [mm]	333	333	333
L [mm]	383	383	383
∅ A [mm]	150	180	180



Price

OW DRZ	0,5-0,6	44,46	87,94	66,99
OWK DRZ	1,0	80,19	83,16	92,36
OWŻ DRZ	0,8	74,54	96,82	88,50

Price

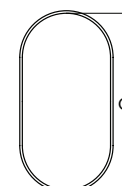
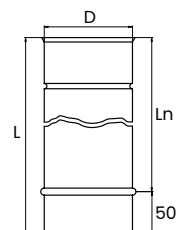
OW DEK	0,5-0,6	51,97	62,65	91,70
OWK DEK	1,0	80,19	93,26	103,05
OWŻ DEK	0,8	69,80	85,23	92,36

Oval chimney liners

Elements made of steel: acid-proof – material type 1.4404 (316L, thickness: 0.5 mm, 0.6 mm and 1.0 mm); heat-proof – material type 1.4828 (309, thickness: 0.8 mm).



Pipe OR, ORK, ORŻ			
OWAL	100x200	110x230	120x240
D [mm]	100	110	120
C [mm]	200	230	240
Ln L=1000 [mm]	950	950	950
Ln L=500 [mm]	450	450	450
Ln L=250 [mm]	200	200	200



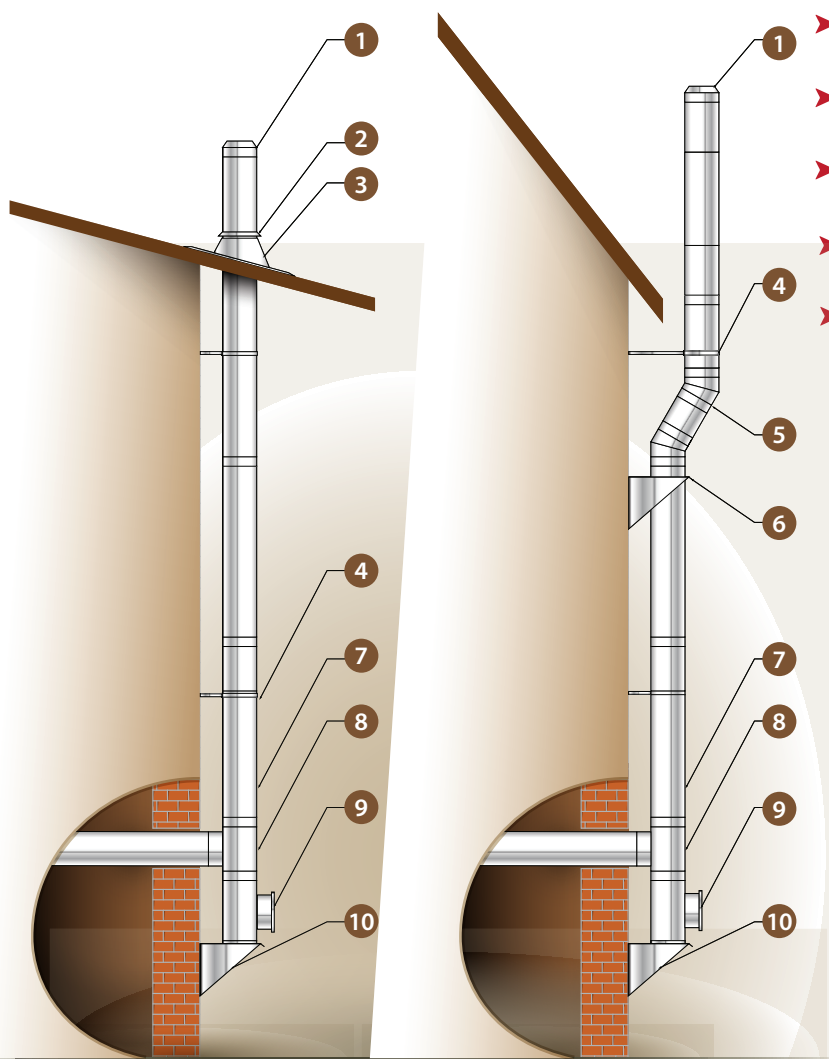
		Price		
OR1000	0,5-0,6	38,69	43,89	46,47
OR500	0,5-0,6	29,00	41,58	34,65
OR250	0,5-0,6	19,33	21,96	23,10
ORK1000	1,0	58,03	77,96	82,00
ORK500	1,0	43,31	49,08	51,97
ORK250	1,0	28,87	32,91	34,65
ORŻ1000	0,8	48,51	64,96	68,43
ORŻ500	0,8	43,02	48,79	51,39
ORŻ250	0,8	28,58	32,57	34,36

Insulated chimneys

Double-wall system, insulated by aluminosilicate wool, as separate outside chimney for many types of kettles.

Examples of typical chimney installations

- Mounted to an outer wall of a building
- Insulation made of ceramic fibers – thickness 50mm
- Wide range of diameters
- Easy and fast installation
- Low heat capacity
- High gas tightness
- Highest fire safety.



JAWAR I

- Inner pipe made of acid-proof stainless steel grade 316L thickness 0,5mm-0,6mm, Outer pipe made of stainless steel 304 thickness 0,6mm,
- Oil, gas, wood, coal
- Operation in wet or dry conditions
- Operation in underpressure
- Working temperature: up to 600°C

JAWAR IŻ

- Inner pipe made of heat-proof stainless steel grade 316L thickness 0,8mm, Outer pipe made of stainless steel 304 thickness 0,6mm,
- Wood, coal
- Operation dry conditions,
- Operation in underpressure
- Working temperature: 200°C – 600°C

- 1 Mouth ending
- 2 Rain flange
- 3 Roof duct

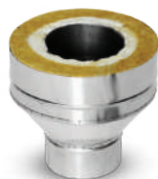
- 4 Wall support
- 5 Elbow
- 6 Transitional wall support

- 7 Pipe
- 8 T-Pipe
- 9 Inspection element / Cleanout

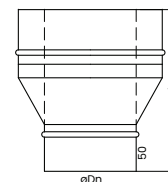
- 10 Base plate

Insulated Chimneys

Elements made of steel: acid-proof – material type 1.4404 (316L, thickness: 0.5 mm, 0.6 mm and 1.0 mm); heat-proof – material type 1.4828 (309, thickness: 0.8 mm). Outer sheath made of steel 1.4301 (304).

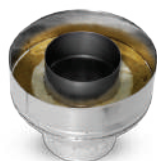


Reverse mouth ending IUO, IUOŹ													
∅D [mm]	80	100	110	120	130	140	150	160	180	200	225	250	300
L [mm]	150												

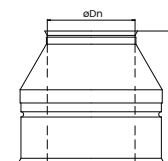


Price

IUO	0,5-0,6	29,49	30,87	-	35,02	37,21	-	41,62	-	46,67	50,99	-	60,63	70,28
IUOŹ	1,0	-	37,98	-	43,09	45,92	-	51,31	-	57,55	63,04	-	74,84	86,75
IUOK	0,8	-	-	-	54,43	55,56	-	64,31	-	74,68	79,38	-	97,02	112,45



Mouth ending IU, IUK, IUŹ													
∅D [mm]	80	100	110	120	130	140	150	160	180	200	225	250	300
L [mm]	150												

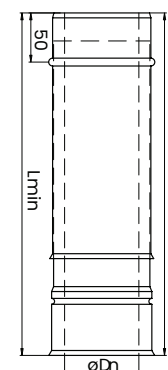


Price

IU	0,5-0,6	29,21	30,87	-	35,00	37,21	-	41,34	-	46,58	50,99	-	60,63	70,28
IUK	1,0	-	-	-	54,43	55,56	-	64,31	-	69,17	79,38	-	89,87	104,04
IUŹ	0,8	-	37,99	-	43,09	45,92	-	51,03	-	57,75	62,65	-	74,84	86,75



Telescope ITE, ITEK, ITEŹ													
∅D [mm]	80	100	110	120	130	140	150	160	180	200	225	250	300
Lmin. [mm]	320												
Lmax. [mm]	520												



Price

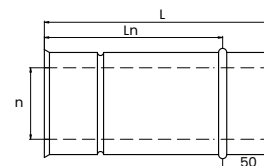
ITE	0,5-0,6	46,21	51,88	-	55,95	57,88	-	68,08	-	85,44	89,57	-	123,70	133,40
ITEK	1,0	-	-	-	72,18	74,81	-	83,91	-	102,53	106,74	-	152,52	164,71
ITEŹ	0,8	-	59,66	-	64,34	66,56	-	78,27	-	98,25	103,00	-	142,24	153,40

Insulated Chimneys

Elements made of steel: acid-proof – material type 1.4404 (316L, thickness: 0.5 mm, 0.6 mm and 1.0 mm); heat-proof – material type 1.4828 (309, thickness: 0.8 mm). Outer sheath made of steel 1.4301 (304).



Pipe IR, IRK, IRŻ													
∅D [mm]	80	100	110	120	130	140	150	160	180	200	225	250	300
L=1000 [mm]	Ln=950												
L=500 [mm]	Ln=450												
L=500 [mm]	Ln=250												

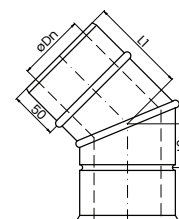


Price

Model	Thickness	80	100	110	120	130	140	150	160	180	200	225	250	300
IR 1000	0,5-0,6	57,26	61,46	-	73,04	79,69	-	86,26	-	96,73	106,11	-	125,96	146,63
IR 500	0,5-0,6	42,72	46,30	-	54,84	58,15	-	64,73	-	72,49	79,65	-	92,25	109,97
IR 250	0,5-0,6	25,35	27,01	-	36,65	38,86	-	43,27	-	48,51	53,19	-	64,91	73,31
IR1000	1,0	-	-	-	104,04	110,84	-	123,89	-	136,64	144,42	-	176,62	205,82
IR 500	1,0	-	-	-	78,24	83,06	-	92,98	-	102,62	110,84	-	132,67	150,21
IR 250	1,0	-	-	-	52,16	55,56	-	61,80	-	68,32	73,59	-	88,45	100,32
IR1000	0,8	-	73,59	-	84,34	89,85	-	100,32	-	110,80	119,62	-	143,04	166,75
IR 500	0,8	-	55,12	-	63,39	67,25	-	75,23	-	83,23	89,85	-	107,49	125,13
IR 250	0,8	-	36,93	-	42,17	44,92	-	50,16	-	55,40	59,81	-	71,66	83,51



Elbow 45 IK, IKK, IKŻ													
∅D [mm]	80	100	110	120	130	140	150	160	180	200	225	250	300
L1 [mm]	135	140	-	145	150	-	172	-	177	181	-	191	200
L2 [mm]	85	90	-	95	100	-	122	-	127	131	-	141	150



Price

Model	Thickness	80	100	110	120	130	140	150	160	180	200	225	250	300
IK45	0,5-0,6	56,22	57,35	-	74,41	74,41	-	92,05	-	108,87	118,24	-	144,15	171,16
IKK45	0,8	-	-	-	119,63	123,60	-	142,03	-	160,12	169,78	-	208,37	254,86
IKŻ45	0,8	-	94,97	-	95,82	98,94	-	113,68	-	127,85	139,76	-	171,51	203,84

Insulated Chimneys

Elements made of steel: acid-proof – material type 1.4404 (316L, thickness: 0.5 mm, 0.6 mm and 1.0 mm); heat-proof – material type 1.4828 (309, thickness: 0.8 mm). Outer sheath made of steel 1.4301 (304).

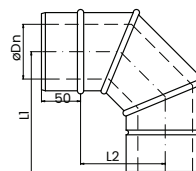


Elbow 90 IK, IKK, IKŻ

ØD [mm]	80	100	110	120	130	140	150	160	180	200	225	250	300
L1 [mm]	221	231	-	244	244	-	296	-	311	321	-	246	371
L2 [mm]	171	181	-	194	194	-	246	-	261	271	-	296	321

Price

IK90	0,5-0,6	79,38	97,57	-	102,53	106,33	-	114,10	-	127,89	140,01	-	166,20	193,48
IKK90	0,8	-	-	-	171,51	179,39	-	190,79	-	207,80	227,39	-	277,83	323,47
IKŻ90	0,8	-	130,41	-	137,21	145,08	-	152,52	-	170,95	187,11	-	222,26	258,83

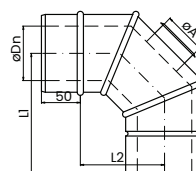


Elbow 90 z rewizją IKR, IKRK, IKRŻ

ØD [mm]	80	100	110	120	130	140	150	160	180	200	225	250	300
L1 [mm]	-	236	-	244	244	-	257	-	272	282	-	307	332
L2 [mm]	-	186	-	194	194	-	207	-	222	232	-	257	282
A [mm]	-	100	-	100	100	-	100	-	150	150	-	150	200

Price

IKR90	0,5-0,6	99,75	101,43	-	122,10	133,12	-	148,28	-	189,37	226,56	-	349,48	288,88
IKRK90	1,0	-	-	-	188,52	205,53	-	228,78	-	284,06	349,55	-	392,93	433,12
IKRŻ90	0,8	-	125,50	-	150,82	164,43	-	183,14	-	210,27	279,53	-	314,40	346,72

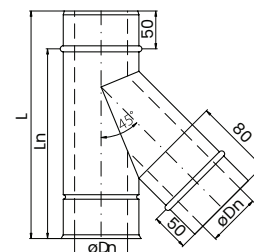


T-Pipe 45 IT, ITK, ITŻ

ØD [mm]	80	100	110	120	130	140	150	160	180	200	225	250	300
L [mm]	333	500	-	500	500	-	500	-	500	500	-	600	700
Ln [mm]	283	450	-	450	450	-	450	-	450	450	-	550	650

Price

IT45	0,5-0,6	84,19	85,05	-	100,60	106,94	-	119,17	-	133,67	146,63	-	173,91	202,30
ITK45	1,0	-	-	-	155,35	165,28	-	183,70	-	206,38	226,23	-	260,00	303,46
ITŻ45	0,8	-	102,06	-	120,72	128,44	-	146,85	-	165,24	180,87	-	214,89	249,76



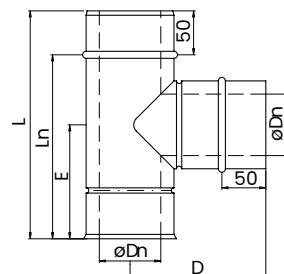
Insulated Chimneys

Elements made of steel: acid-proof – material type 1.4404 (316L, thickness: 0.5 mm, 0.6 mm and 1.0 mm); heat-proof – material type 1.4828 (309, thickness: 0.8 mm). Outer sheath made of steel 1.4301 (304).



T-Pipe 90 IT, ITK, ITZ

ØD [mm]	80	100	110	120	130	140	150	160	180	200	225	250	300
E [mm]	163	163	-	163	163	-	163	-	250	250	-	250	250
L [mm]	333	333	-	333	333	-	333	-	500	500	-	500	500
D [mm]	170	180	-	190	190	-	205	-	220	230	-	255	280
Ln [mm]	283	283	-	283	283	-	283	-	450	450	-	450	450



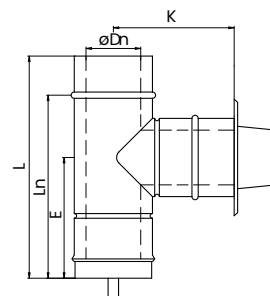
Price

IT90	0,5-0,6	77,17	79,01	-	80,48	85,44	-	95,02	-	106,66	116,86	-	138,64	161,24
ITK90	1,0	-	-	-	134,66	142,88	-	159,04	-	178,32	195,33	-	231,90	262,11
ITZ90	0,8	-	103,19	-	144,63	114,25	-	127,29	-	142,60	156,20	-	185,40	206,74



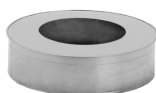
Inspection element/cleanout IW, IWK, IWZ

ØD [mm]	80	100	110	120	130	140	150	160	180	200	225	250	300
E [mm]	213	213	-	213	213	-	213	-	300	300	-	300	300
L [mm]	383	383	-	383	383	-	383	-	550	550	-	550	550
D [mm]	170	180	-	190	190	-	205	-	220	230	-	255	280
Ln [mm]	333	333	-	333	333	-	333	-	500	500	-	500	500



Price

IW90	0,5-0,6	101,98	102,53	-	109,42	116,30	-	129,54	-	145,25	159,31	-	189,07	203,96
IWK90	1,0	-	-	-	182,85	194,48	-	216,59	-	242,67	266,20	-	316,10	341,05
IWZ90	0,8	-	137,21	-	146,28	155,64	-	173,21	-	194,19	212,90	-	252,88	272,72

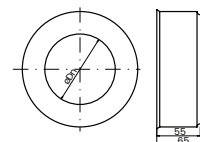


End cover IEND

ØD [mm]	80	100	110	120	130	140	150	160	180	200	225	250	300
---------	----	-----	-----	-----	-----	-----	-----	-----	-----	-----	-----	-----	-----

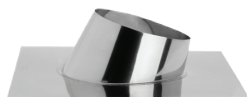
Price

IEND	0,5-0,6	20,55	24,80	-	25,72	25,72	-	17,28	-	29,92	31,23	-	37,01	39,13
------	---------	-------	-------	---	-------	-------	---	-------	---	-------	-------	---	-------	-------



Insulated Chimneys

Elements made of steel: acid-proof – material type 1.4404 (316L, thickness: 0.5 mm, 0.6 mm and 1.0 mm); heat-proof – material type 1.4828 (309, thickness: 0.8 mm). Outer sheath made of steel 1.4301 (304)



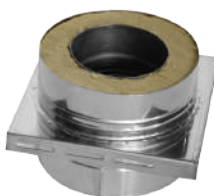
Roof duct IPD

ØD [mm]	80	100	110	120	130	140	150	160	180	200	225	250	300
(0-5)	730x1000												
(5-15)	730x1000												
(15-30)	730x1000												
(30-45)	730x1000												



Price

Model	0,5-0,6	34,02	40,24	-	40,24	41,07	47,07	42,44	45,53	46,85	54,02	55,12	64,57	67,20
IPD0-5														
IPD5-20		43,66	45,75	-	46,85	42,45	43,13	44,23	47,13	49,61	56,43	60,37	72,97	77,96
IPD20-35		50,46	50,44	-	51,81	48,95	49,98	52,92	55,79	57,33	62,29	64,22	78,67	82,42
IPD20-35		58,40	57,88	-	60,36	57,86	58,88	61,74	65,38	66,70	74,41	83,23	95,55	97,65

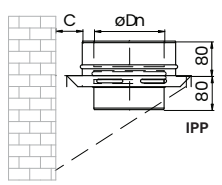
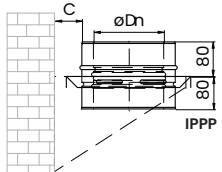
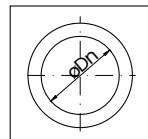


Base plate-through IPP/IPPP

ØD [mm]	80	100	110	120	130	140	150	160	180	200	225	250	300
C [mm]	Cmin=50												

Price

IPP	1,5	44,62	47,06	-	58,11	59,53	-	73,71	-	98,65	102,37	-	106,89	117,86
IPPP	1,5	64,35	65,62	-	67,98	70,87	-	81,32	-	105,52	118,38	-	129,20	135,24

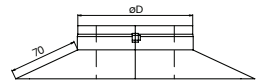


Rain falange IKPN

ØD [mm]	80	100	110	120	130	140	150	160	180	200	225	250	300
---------	----	-----	-----	-----	-----	-----	-----	-----	-----	-----	-----	-----	-----

Price

IKPN	0,6	10,37	10,37	11,74	11,74	11,74	11,74	11,74	11,74	12,60	13,65	14,88	17,32	22,31
------	-----	-------	-------	-------	-------	-------	-------	-------	-------	-------	-------	-------	-------	-------



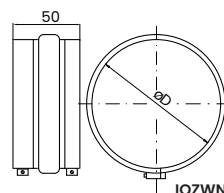
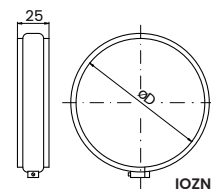
Insulated Chimneys

Elements made of steel: acid-proof – material type 1.4404 (316L, thickness: 0.5 mm, 0.6 mm and 1.0 mm); heat-proof – material type 1.4828 (309, thickness: 0.8 mm). Outer sheath made of steel 1.4301 (304)



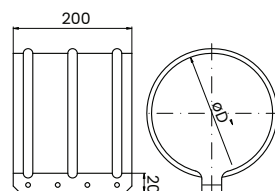
Band clip IOZN/IOZWN

øD [mm]		80	100	110	120	130	140	150	160	180	200	225	250	300
Price														
IOZN	0,6	9,64	9,97	9,97	-	-	-	-	-	-	-	-	-	-
IOZWN	0,6	-	-	-	-	9,84	9,84	10,89	11,55	12,07	13,65	19,95	24,67	25,72



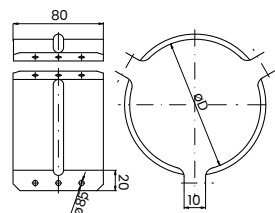
Clip strengthened IOW

øD [mm]		80	100	110	120	130	140	150	160	180	200	225	250	300
Price														
IOW	0,6	-	33,05	34,06	34,17	34,17	35,43	36,38	37,48	38,58	41,06	41,06	42,26	48,56



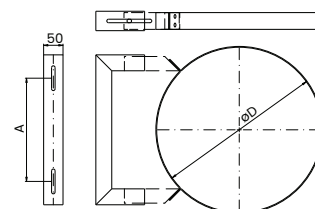
Guy support IOO

øD [mm]		80	100	110	120	130	140	150	160	180	200	225	250	300
Price														
IOO	0,6	-	17,09	17,32	17,64	17,91	18,11	18,19	18,48	18,74	19,29	19,84	20,39	22,05



Wall support strengthened IOSW

øD [mm]		80	100	110	120	130	140	150	160	180	200	225	250	300
Price														
IOSW	1,5	-	19,20	-	17,82	17,82	-	17,82	-	17,91	20,94	21,77	25,46	27,30



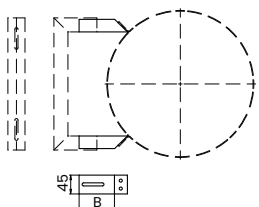
Insulated Chimneys

Elements made of steel: acid-proof – material type 1.4404 (316L, thickness: 0.5 mm, 0.6 mm and 1.0 mm); heat-proof – material type 1.4828 (309, thickness: 0.8 mm). Outer sheath made of steel 1.4301 (304)



Brackets to wall support IWSO

ØD [mm]	250	280	300	350	400	450	500	550	600
100	50-125								
175	125-200								
250	200-275								
325	275-350								
400	350-425								
475	425-500								
550	500-575								
625	575-650								



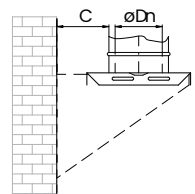
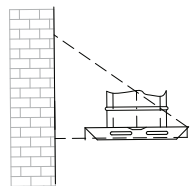
Price

		50-125	125-200	200-275	275-350	350-425	425-500	500-575	575-650
IWSO	1,5	13,65	16,53	19,68	22,83	24,93	27,56	28,93	31,73

Base plate (no brackets) IPLP

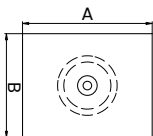


ØD [mm]	100	120	130	150	180	200	250	300	350	400	450	500	
ØA [mm]	200	225	225	250	280	300	350	400	450	500	550	600	
Nr płyty	I	I	I	II	II	III	III	III	IV	IV	IV	IV	
C	I	0-85	0-70	0-70	0-60	0-45	0-35	-	-	-	-	-	
	II	50-125	50-125	50-125	50-125	50-125	50-125	0-55	0-30	0-5	-	-	
	III	125-200	125-200	125-200	125-200	125-200	50-125	50-125	50-125	0-50	0-50	0-25	-
	IV	200-350	200-350	200-350	200-350	200-275	200-275	125-200	125-200	75-125	75-125	25-125	0-100
	V	350-500	350-500	350-500	350-500	275-425	275-425	200-350	200-350	125-350	125-350	125-275	100-250



Base plate (no brackets) IPLP

	plate I	plate II	plate III	plate IV
A	273	340	460	606
B	194	194	273	273



Price

		typ I	typ II	typ III	typ IV	typ V
IPLP	1,5	14,60	16,93	28,11	36,00	56,13

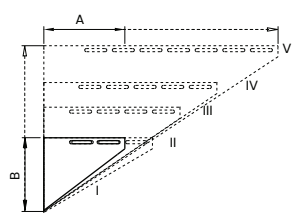
Insulated Chimneys

Elements made of steel: acid-proof – material type 1.4404 (316L, thickness: 0.5 mm, 0.6 mm and 1.0 mm); heat-proof – material type 1.4828 (309, thickness: 0.8 mm). Outer sheath made of steel 1.4301 (304)



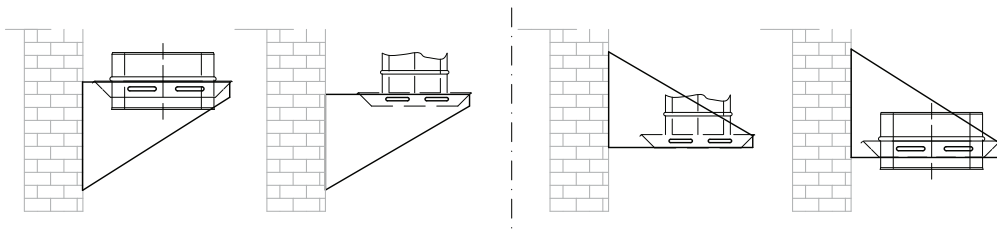
Supports to base plate IWSP

	base plate I	base plate II	base plate III	base plate IV	base plate V
A	250	333	400	500	630
B	250	250	333	400	500



Price

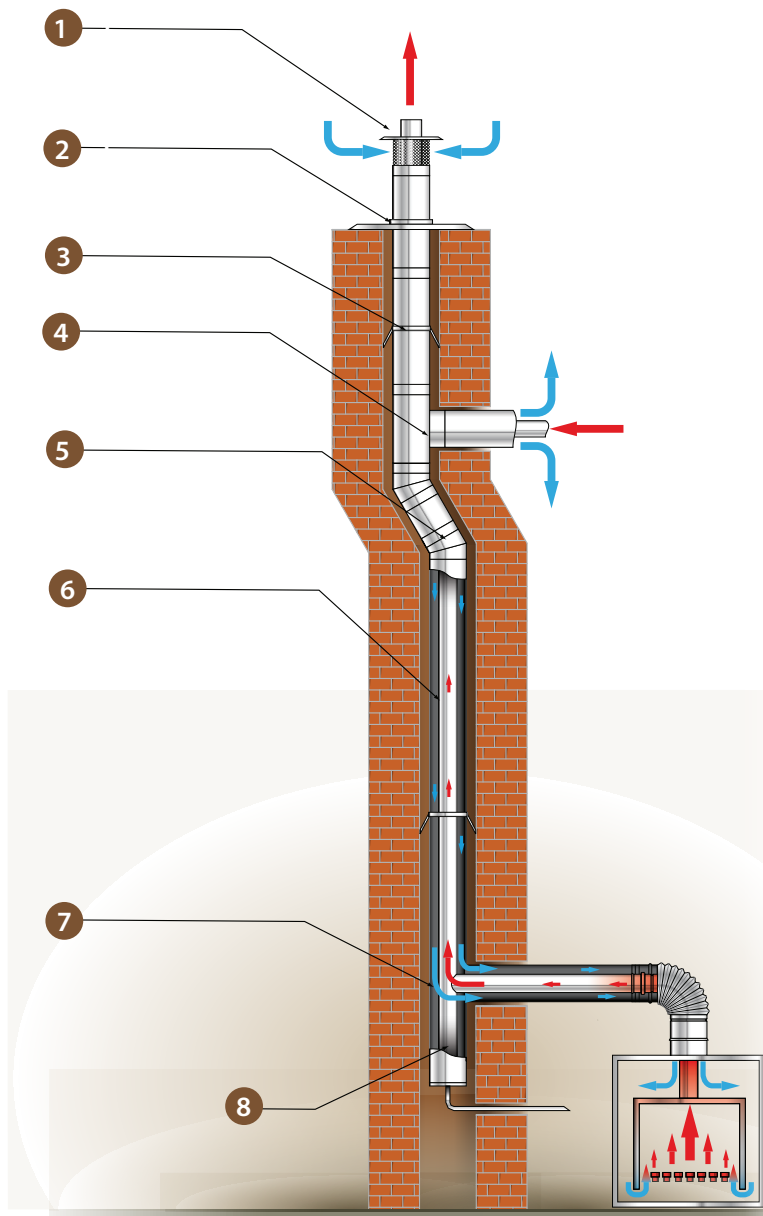
		base plate I	base plate II	base plate III	base plate IV	base plate V
IWSP	1,5	12,68	16,80	18,11	35,96	56,96



Overpressure chimney systems

This system include two subsystems: Condensation system and TURBO system

Examples of typical chimney installations



- 1 Injector Cap
- 2 Roof Cover
- 3 Stabilizer

- 4 Elbow
- 5 Pipe
- 6 T-pipe or Elbow wit supportq

Condensation systems

Single-wall chimney system destined to condensate kettles. It has seals, and thank to this whole system and all elements are leakproof.

- Made of stainless steel grade 316L thickness 0,5mm – 0,6mm,
- Working temperature: do 200°C,
- Operation in wet conditions,
- Operation in overpressure,
- Installation inside of a brick chimney,
- Wide range of diameters,
- Easy and fast installation,
- Ultimate gas-tightness ensured by silicone gaskets,
- Low heat capacity,

Turbo System

TURBO System was designed to work with modern kettles with closed combustion chamber.

- Inner pipe made of stainless steel grade 316L thickness 0,5mm – 0,6mm,
- Outer pipe made of stainless steel grade 304 thickness 0,5mm – 0,6mm,
- Working temperature: up to 200°C,
- Operation in wet conditions,
- Operation in overpressure,
- Supplies air to the closed combustion chamber in boiler,
- Installation inside of a brick chimney,
- Wide range of diameters,
- Easy and fast installation,
- Ultimate gas-tightness ensured by silicone gaskets,
- Low heat capacity,

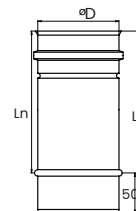
Overpressure chimney systems

Condensation systems



Pipe KR

ØD [mm]	60	80	100	110	120	130	140	150	160	180	200	225	250
L=1000 [mm]	950												
L=500 [mm]	450												
L=250 [mm]	200												



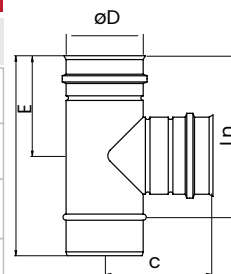
Price

KR1000	0,5-0,6	19,34	20,62	23,10	24,25	25,41	26,27	30,66	32,71	38,40	47,64	49,66	55,10	61,50
KR500	0,5-0,6	13,86	14,71	19,40	18,48	19,34	21,07	21,94	23,67	28,87	37,53	39,84	41,00	43,89
KR250	0,5-0,6	11,55	12,41	12,98	14,43	84,41	15,30	16,17	17,90	19,34	24,54	25,98	29,45	34,80



T-Pipe 90° KT

ØD [mm]	60	80	100	110	120	130	140	150	160	180	200	225	250
C [mm]	190	190	200	205	210	215	220	225	230	240	250	262	275
E [mm]	107,5	107,5	127,5	127,5	127,5	127,5	170	170	170	170	170	250	250
L [mm]	200	200	250	250	250	250	333	333	333	333	333	500	500
Ln [mm]	150	150	200	200	200	200	283	283	283	283	283	450	450



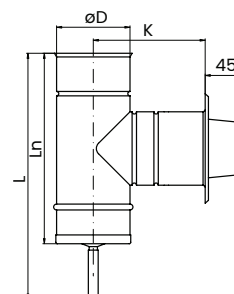
Price

KT90	0,5-0,6	22,52	23,14	24,54	25,98	27,42	28,29	30,04	33,49	36,09	42,73	56,12	62,08	68,33
------	---------	-------	-------	-------	-------	-------	-------	-------	-------	-------	-------	-------	-------	-------



Complete inspection element / cleanout 90° KW

ØD [mm]	60	80	100	110	120	130	140	150	160	180	200	225	250
Ln [mm]	201	201	251	251	251	251	334	334	334	334	334	501	501
L [mm]	251	251	310	301	301	301	384	384	384	384	384	551	551
K [mm]	180	180	200	205	210	215	220	225	230	240	250	262	275

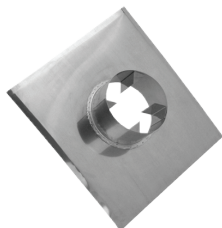


Price

KW	0,5-0,6	30,31	31,76	32,91	34,93	37,40	39,84	41,74	42,73	48,51	61,21	71,89	77,09	85,75
----	---------	-------	-------	-------	-------	-------	-------	-------	-------	-------	-------	-------	-------	-------

Overpressure chimney systems

Condensation systems

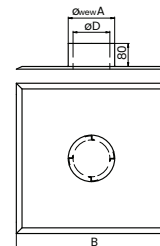


Roof cover with exhaust KBK

$\varnothing D$ [mm]	60	80	100	110	120	130	140	150	160	180	200	225	250
$\varnothing A$ [mm]	110	130	150	160	170	180	190	220	210	230	250	275	300
B [mm]	330	330	330	330	330	330	330	360	360	400	400	500	500

Price

KBK	0,5-0,6	28,29	29,74	29,74	30,03	30,31	31,35	32,34	33,49	34,93	39,27	59,48	61,50	65,83
-----	---------	-------	-------	-------	-------	-------	-------	-------	-------	-------	-------	-------	-------	-------

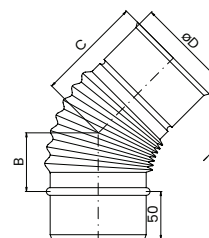


Bended elbow 45° KK

$\varnothing D$ [mm]	60*	80	100	110	120	130	140	150	160	180	200	225	250
B [mm]	42	50	70	75	80	90	95	110	135	140	150	160	170
C [mm]	92	100	120	125	130	140	145	160	185	190	200	210	220

Price

KK45	0,5-0,6	33,00	21,34	22,23	23,38	24,54	26,27	27,43	30,03	32,34	36,96	44,17	64,16	72,18
------	---------	-------	-------	-------	-------	-------	-------	-------	-------	-------	-------	-------	-------	-------

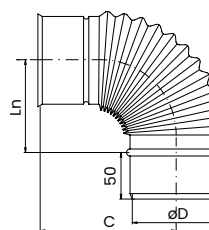


Bended elbow 90° KK

$\varnothing D$ [mm]	60*	80	100	110	120	130	140	150	160	180	200	225	250
B [mm]	92	125	155	172	185	190	195	205	220	225	230	252,5	296
C [mm]	142	70	100	117	130	135	140	150	165	170	175	197,5	246

Price

KK90	0,5-0,6	41,25	26,56	27,33	27,72	28,87	31,76	35,22	40,13	53,99	55,44	70,74	74,25	84,70
------	---------	-------	-------	-------	-------	-------	-------	-------	-------	-------	-------	-------	-------	-------

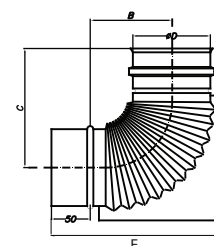


Condensation bend with support 90° KK PODP

$\varnothing D$ [mm]	60*	80	100	110	120	130	140	150	160	180	200	225	250
B [mm]	92	125	155	172	185	190	195	205	220	225	230	252,5	296
C [mm]	142	70	100	117	130	135	140	150	165	170	175	197,5	246
E [mm]	202	195	215	225	235	245	255	265	275	295	315	350	365

Price

KK90PODP	0,5-0,6	52,25	39,24	43,31	45,33	47,93	49,08	52,86	56,43	64,73	69,87	73,92	84,60	98,75
----------	---------	-------	-------	-------	-------	-------	-------	-------	-------	-------	-------	-------	-------	-------

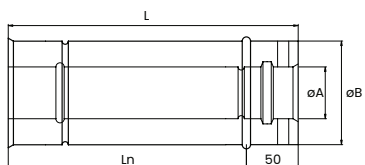


Overpressure chimney systems

Turbo System



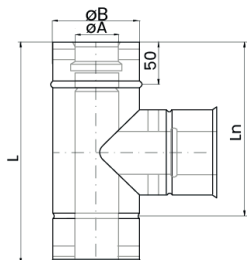
Rura TR			
ØA [mm]	60	80	100
ØB [mm]	100	125	150
L=1000 [mm]	950		
L=500 [mm]	450		
L=250 [mm]	200		



Price				
TR1000	0,5-0,6	39,84	42,73	54,57
TR500	0,5-0,6	30,60	34,07	36,09
TR250	0,5-0,6	25,98	28,29	32,07



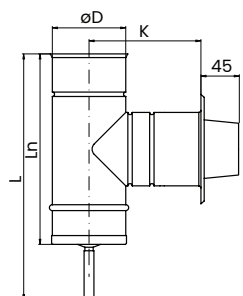
T-Pipe 90° TT			
ØA [mm]	60	80	100
ØB [mm]	100	125	150
L [mm]	240	250	333
L _n [mm]	190	200	283



Price				
TT90	0,5-0,6	54,28	58,32	62,94



Inspection element TW			
ØA [mm]	60	80	100
ØB [mm]	100	125	150
L [mm]	251	251	374
L _n [mm]	301	301	425



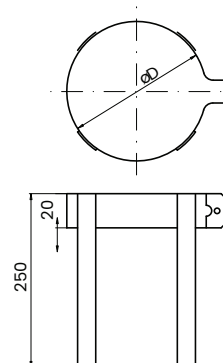
Price				
TW	0,5-0,6	69,58	79,29	90,88

Overpressure chimney systems

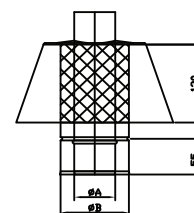
Turbo System



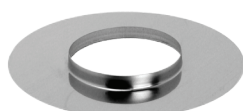
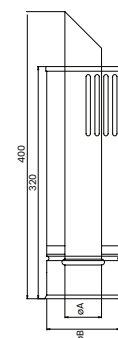
Stabilizer WSN				
$\varnothing D$ [mm]		100	125	150
Ceny				
WSN	0,5-0,6	5,50	6,05	6,87



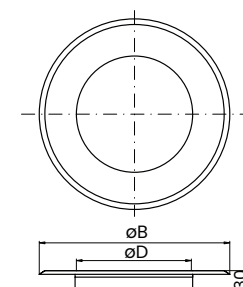
Vertical end TWS				
$\varnothing A$ [mm]		60	80	100
$\varnothing B$ [mm]		100	125	150
Price				
TWS	0,5-0,6	32,91	36,09	39,84



Horizontal end TWP				
$\varnothing A$ [mm]		60	80	100
$\varnothing B$ [mm]		100	125	150
Price				
TWP	0,5-0,6	65,83	68,47	71,89



Cover cap WRM				
$\varnothing A$ [mm]		60	80	100
$\varnothing B$ [mm]		100	125	150
Price				
WRM	0,5-0,6	11,55	12,17	14,14



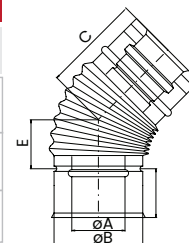
Overpressure chimney systems

Turbo System



Banded elbow 45° TK45

$\varnothing A$ [mm]	60	80	100
$\varnothing B$ [mm]	100	125	150
C [mm]	95	100	105
E [mm]	40	45	50



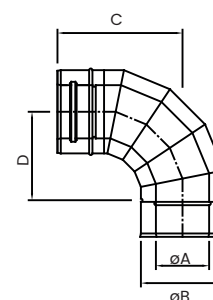
Price

TK45	0,5-0,6	62,15	55,00	57,46
------	---------	-------	-------	-------



Kolano segmentowe 90° TKS90

$\varnothing A$ [mm]	60	80	100
$\varnothing B$ [mm]	100	125	150
C [mm]	165	187	205
D [mm]	115	133	145



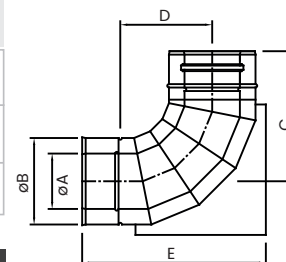
Price

TKS90	0,5-0,6	291,50	248,38	298,10
-------	---------	--------	--------	--------



Kolano segmentowe z podporą TKS PODP

$\varnothing A$ [mm]	60	80	100
$\varnothing B$ [mm]	100	187	205
C [mm]	165	133	145
D [mm]	235	255	285



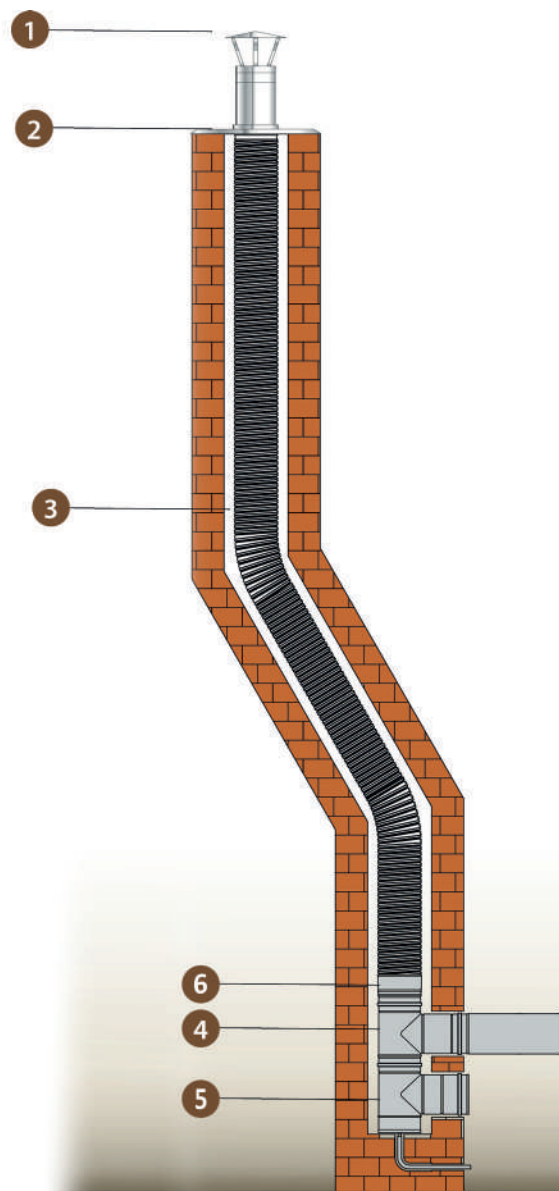
Price

TKS POD	0,5-0,6	352,00	316,47	336,60
---------	---------	--------	--------	--------

* dostępne inne kąty rozwarcia

Flexible chimney liners

Examples of typical chimney installations



- | | |
|---------------------------|----------------------|
| 1 Injector Cap | 4 T-Pipe |
| 2 Roof Cover | 5 Inspection element |
| 3 Flexible chimney liners | 6 Adapter |

Jawar Monoflix

JAWAR MONOFLIX is a flexible chimney liner made of acid-resistant stainless steel (0,10mm)

- Made of stainless steel grade 316L thickness 0,10mm,
- Working temperature: up to 450°C,
- Operation in wet and dry conditions,
- Operation in underpressure,
- Installation inside of a brick chimney,
- Wide range of diameters,
- Easy and fast installation,
- Low heat capacity,
- High gas tightness.

Jawar Duoflix

JAWAR DUOFLIX is a flexible chimney liner made of acid-resistant stainless steel (2x0,10mm)

- Made of stainless steel grade 316L thickness 2 x 0,10mm,
- Working temperature: up to 600°C,
- Operation in wet and dry conditions,
- Operation in underpressure and overpressure,
- Minimum bending diameter: 3 x pipe diameter Installation inside of a brick chimney,
- Wide range of diameters,
- Easy and fast installation,
- Low heat capacity,
- High gas tightness.

Flexible chimney liners

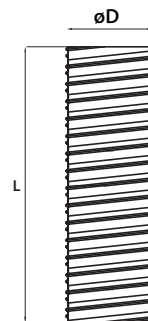


Flexible pipe SR

øD [mm]	80	100	110	120	125	130	150	160	180	200	225	250
SRM	+	+	+	+	+	+	+	-	+	+	-	-
SR	+	+	+	+	+	+	+	+	+	+	-	+

Price

SRM	1x0,10	9,53	11,55	12,41	13,28	13,66	14,43	15,87	-	18,77	21,07	-	-
SR	2x0,10	14,72	17,32	19,92	20,49	-	19,15	24,83	25,98	28,87	32,04	-	39,27

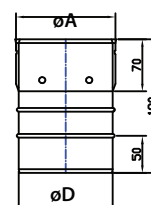


Flex adapter SRZWS (LINERS-SPIRO)

øD [mm]	80	100	110	120	125	130	150	160	180	200	250
øA	87	107	117	127	132	137	157	167	187	207	257

Price

SRZWS	0,5-0,6	20,21	20,79	23,39	25,98	-	27,14	30,88	31,48	32,37	33,85	-
-------	---------	-------	-------	-------	-------	---	-------	-------	-------	-------	-------	---

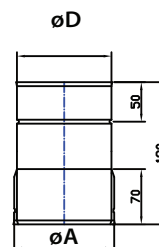


Flex adapter SRZSW (SPIRO-LINERS)

øD [mm]	80	100	110	120	125	130	150	160	180	200	250
øA	87	107	117	127	132	137	157	167	187	207	257

Price

SRZSW	0,5-0,6	20,21	-	20,79	25,98	-	30,88	30,88	30,88	-	33,85	-
-------	---------	-------	---	-------	-------	---	-------	-------	-------	---	-------	---

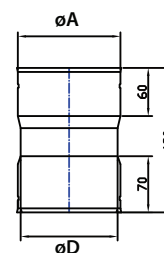


Flex adapter SRZSS (SPIRO-SPIRO)

øD [mm]	80	100	110	120	125	130	150	160	180	200	250
øA	87	107	117	127	132	137	157	167	187	207	257

Price

SRZSS	0,5-0,6	20,79	23,10	-	27,14	-	-	31,76	-	-	-	-
-------	---------	-------	-------	---	-------	---	---	-------	---	---	---	---

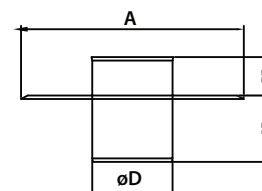


Chimney plate Spiro SBK

øD [mm]	80	100	110	120	125	130	150	160	180	200	250
A	333	333	333	333	333	333	360	360	400	400	500

Price

SBK	0,5-0,6	21,23	21,36	21,72	21,94	22,68	23,38	28,29	31,66	40,71	45,04	53,90
-----	---------	-------	-------	-------	-------	-------	-------	-------	-------	-------	-------	-------



Jawar Smooth

The JAWAR Smooth chimney is used in elegant interiors, where the fireplace and the chimney are an important decorative element of the room. The JAWAR Smooth chimney can be connected to the fireplace with an upper or rear connection. It carries the smoke out through the ceiling and roof and at the same time transfers some heat directly to the apartment



- Inner pipe made of acid-proof stainless steel grade 316L thickness 0,5mm-0,6mm,
- Outer pipe made of stainless steel 304 thickness 0,6mm,
- Outer pipe black powder painted,
- Invisible outer pipe connections made in the "Smooth" technology
- Insulation made of ceramic fibers - thickness 50mm,
- Working temperature: up to 450°C,
- Operation in dry conditions,
- Operation in underpressure,
- Mounted inside the house,
- Wide range of diameters,
- Easy and fast installation,
- Low heat capacity,
- High gas tightness,
- Highest fire safety,
- Distance to burnable materials: 50mm in open space.

- 1 Base plate
- 2 T-pipe
- 3 Pipe

- 4 Wall supports with brackets
- 5 Weathering raincap
- 6 Side installation console

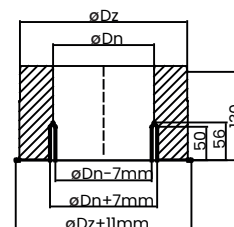
- 7 Two-part round rosette
- 8 Roof clamp
- 9 Roof support

Jawar Smooth



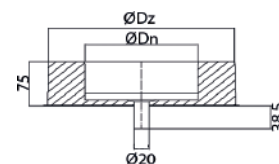
Start section with sleeve IESM

$\varnothing Dn/Dz$ [mm]	130/225	150/250	180/280	200/300
Price				
IESM	59,15	63,22	69,34	74,10



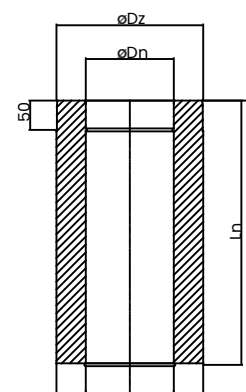
End plug IODSS

$\varnothing Dn/Dz$ [mm]	130/225	150/250	180/280	200/300
Price				
IODSS	40,80	43,80	46,80	52,20



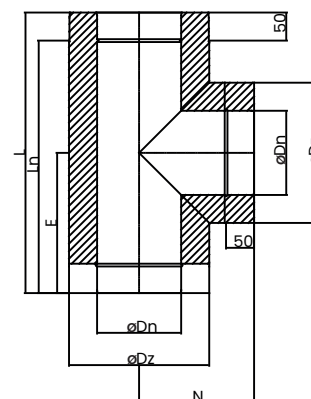
Pipe IRSM

$\varnothing Dn/Dz$ [mm]	130/225	150/250	180/280	200/300	
L1000	Ln=950				
L500	Ln=450				
L250	Ln=200				
Price					
IODSS	L1000	74,40	78,00	82,80	90,00
IODSS	L500	44,64	46,80	49,68	54,00
IODSS	L250	26,04	27,30	28,98	31,50

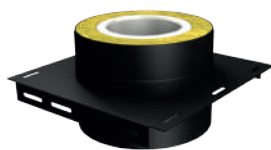


T-Pipe90 ITSM90

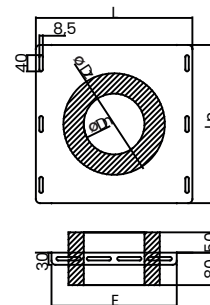
$\varnothing Dn/Dz$ [mm]	130/225	150/250	180/280	200/300
E	163	163	250	250
L	333	333	500	500
N	190	205	220	230
Ln	283	283	450	450
Price				
ITSM90	110,64	123,05	138,12	151,32



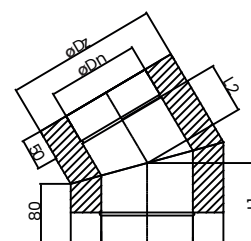
Jawar Smooth



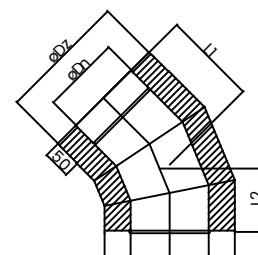
Base plate IPPPSM				
$\varnothing Dn/Dz$ [mm]	130/225	150/250	180/280	200/300
E	285	309	340	360
L	362	386	417	437
Ln	362	390	417	437
Price				
IPPPSM	97,20	111,60	144,00	162,00



Bend 27 IKSM27				
$\varnothing Dn/Dz$ [mm]	130/225	150/250	180/280	200/300
Ln1	130	134	137	140
Ln2	75	79	82	85
Price				
IKSM27	96,36	107,06	124,91	143,16

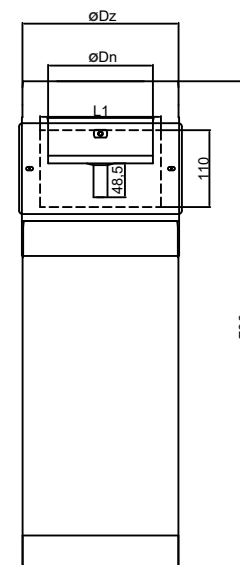


Bend 45 IKSM45				
$\varnothing Dn/Dz$ [mm]	130/225	150/250	180/280	200/300
Ln1	145	172	177	181
Ln2	95	122	127	131
Price				
IKSM45	104,05	118,97	140,98	153,12



Side installation console ZPBSM				
$\varnothing Dn/Dz$ [mm]	130/225	150/250	180/280	200/300
L	173	173	248	248
Price				
ZPBSM	154,32	172,33	188,30	206,66

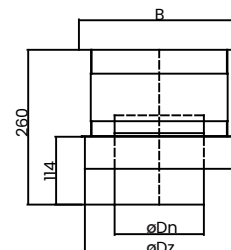
Part of set: end plug, cover for inspection, adjustable foot, bottom unit



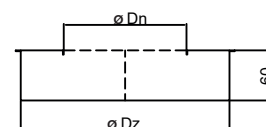
Jawar Smooth



Weathering raincap INDSM				
øDn/Dz [mm]	130/225	150/250	180/280	200/300
B	245	270	300	320
Price				
INDSM	70,20	73,80	78,00	82,80

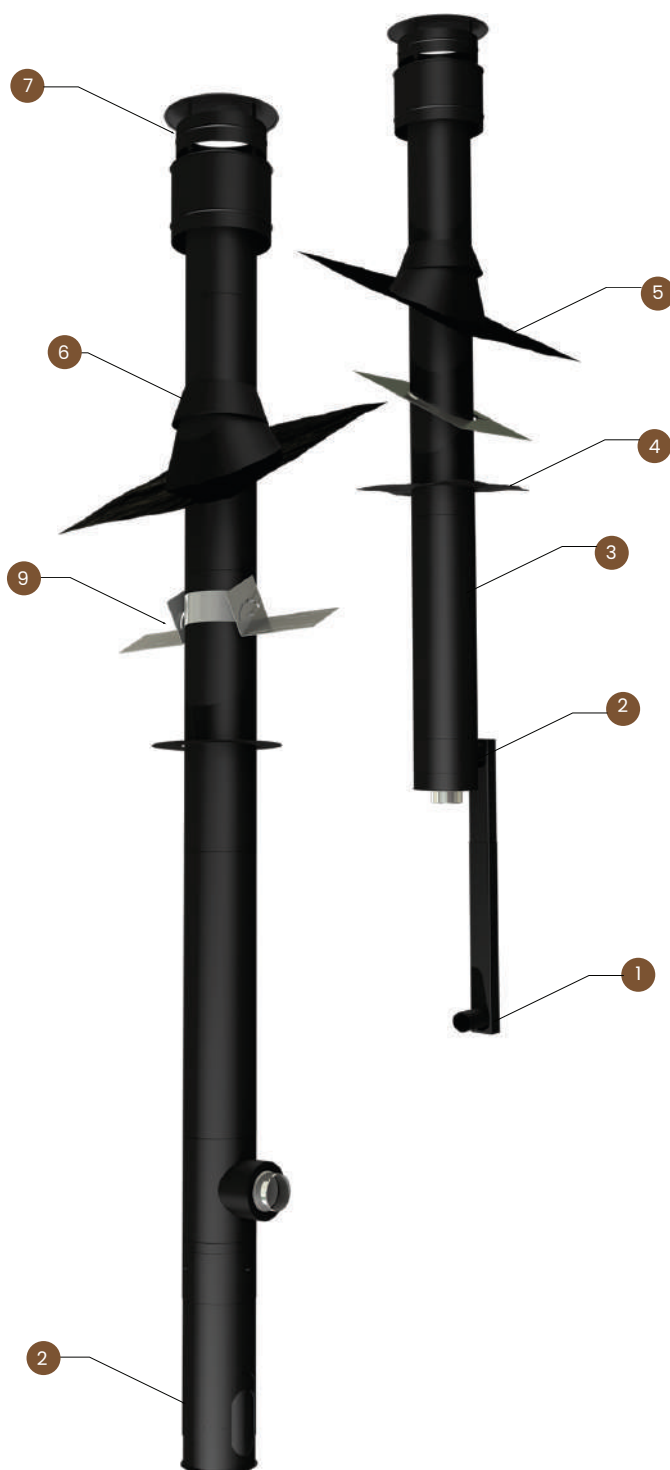


Insulation cover IENDSM				
øDn/Dz [mm]	130/225	150/250	180/280	200/300
Price				
IENDSM	33,60	36,00	38,40	42,00



Jawar Aero

JAWAR Aero is a chimney that can work with fireplaces with a closed combustion chamber, ensuring complete safety for users. It has a channel that supplies air to the fireplace, so there is no need to supply air, e.g. through a pipe under the floor. Heat exchange between the smoke duct and the air duct allows for heat recovery and an increase in the energy efficiency of the heating system. The JAWAR Aero chimney can be installed in rooms with mechanical ventilation.



- Inner pipe made of acid-proof stainless steel grade 316L thickness 0,5mm-0,6mm,
- Middle pipe made of stainless steel grade 304 thickness 0,5mm,
- Outer pipe made of stainless steel 304 thickness 0,6mm,
- Outer pipe black powder painted,
- Invisible outer pipe connections made in the "Smooth" technology
- Insulation made rockwool – thickness 30mm,
- Additional airchannel,
- Working temperature: up to 450°C,
- Operation in dry conditions,
- Operation in underpressure,
- Mounted inside the house,
- Wide range of diameters,
- Easy and fast installation,
- Low heat capacity,
- High gas tightness,
- Highest fire safety,
- Distance to burnable materials: 50mm in open space.

- ① Air supply connection st
- ② Top start section with sleeve
- ③ Pipe

- ④ Two-part round rosette
- ⑤ Roof flashing
- ⑥ Rain falange

- ⑦ Weathering raincap
- ⑧ Side installation console
- ⑨ Roof support

Jawar Aero



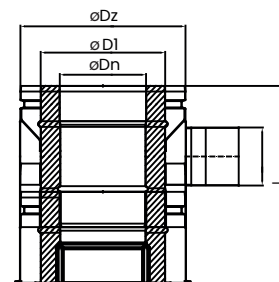
Top start section with sleeve AZG

$\varnothing D_n/D_z$ [mm]	130/250	150/280	180/300
$\varnothing D_1$	190	220	240
L	280	280	280

Price

AZG	100,43	105,41	114,12
-----	--------	--------	--------

Part of set: air connection tee, startup element

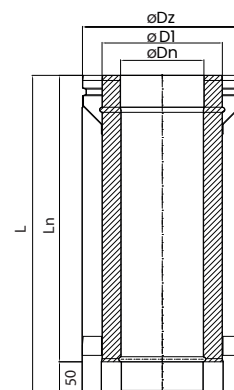


PipeAR

$\varnothing D_n/D_z$ [mm]	130/250	150/280	180/300
$\varnothing D_1$	190	220	240
L1000		L=950	
L500		L=450	
L250		L=200	

Price

	108,25	113,20	143,82
L1000			
L500	64,94	68,04	86,59
L250	45,55	50,23	59,69

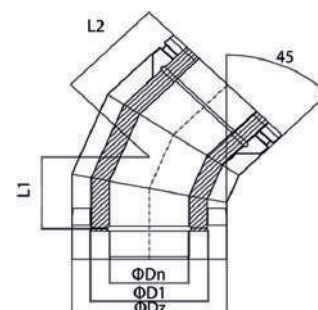


Bend 45 AEK45

$\varnothing D_n/D_z$ [mm]	130/250	150/280	180/300
$\varnothing D_1$	190	220	240
L1	180	187	191
L2	126	133	137

Price

AEK45	170,10	188,04	210,31
-------	--------	--------	--------

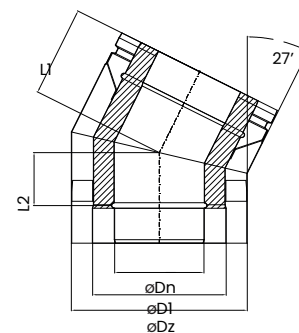


Bend 27 AEK27

$\varnothing D_n/D_z$ [mm]	130/250	150/280	180/300
$\varnothing D_1$	190	220	240
L1	130	133	137
L2	75	79	82

Price

AEK27	170,10	188,04	210,31
-------	--------	--------	--------



Jawar Aero

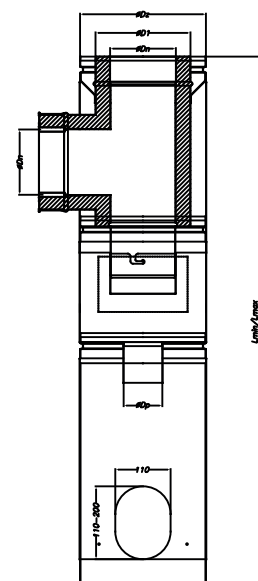


Side installation console AZB

$\varnothing D_n/D_z$ [mm]	130/250	150/280	180/300
$\varnothing D_1$	190	220	240
$\varnothing D_p$	80		
Lmin	1025		
Lmax	1110		

Price

AZB	342,68	359,08	384,43
-----	--------	--------	--------

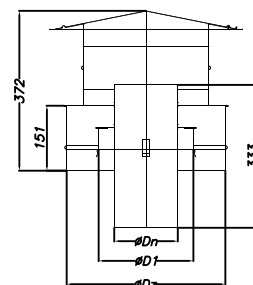


Weathering raincap ANK

$\varnothing D_n/D_z$ [mm]	130/250	150/280	180/300
$\varnothing D_1$	190	220	240

Price

ANK	126,67	132,43	146,66
-----	--------	--------	--------

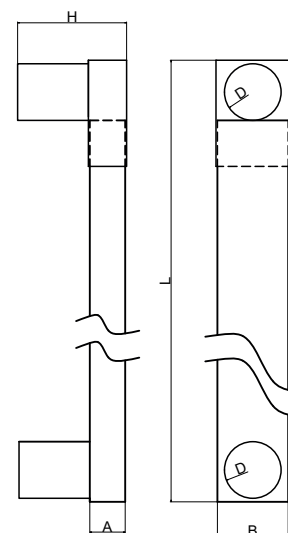


Air supply connection set APPPM

L	1285
H	15
D	80
A	50
B	100

Price

APPPM	99,30
-------	-------

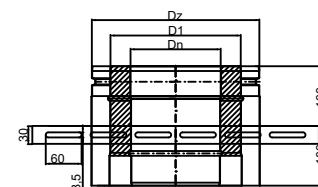


Base plate APPP

$\varnothing D_n/D_z$ [mm]	130/250	150/280	180/300
$\varnothing D_1$	190	220	240

Price

APPP	80,41	86,59	92,78
------	-------	-------	-------

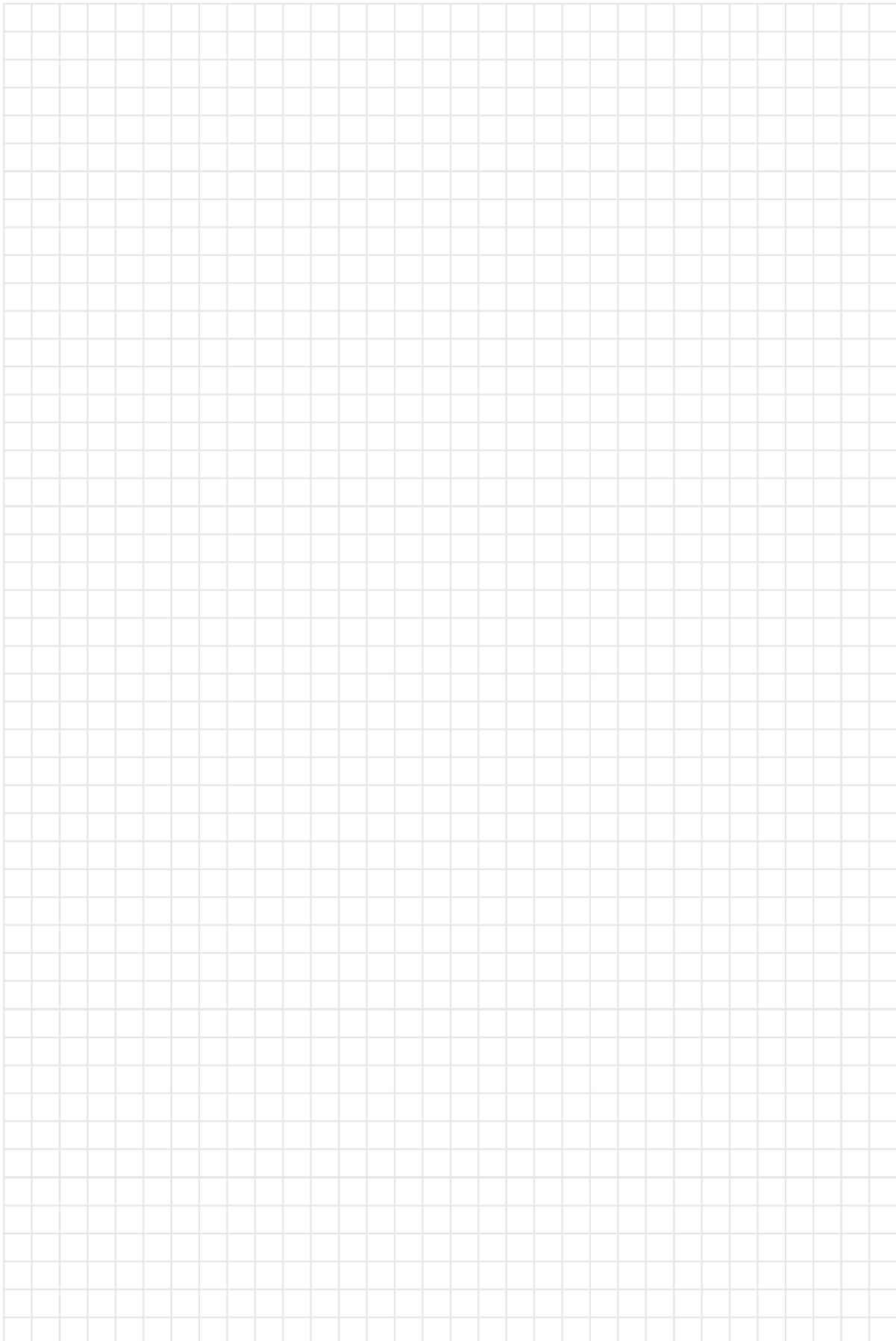


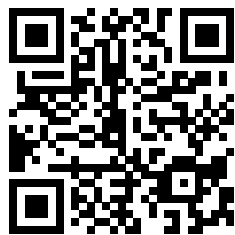
Jawar Smooth & Aero accessories

	Index	Smooth 130	Smooth 150 Aero 130	Smooth 180 Aero 150	Smooth 180 Aero 150
Base plate support 80-125	IWSPM II	21,76	21,76	21,76	21,76
Base plate support 100-125	IWSPM III	32,63	32,63	32,63	32,63
Wall bracket 80-125	IOSWM+ IWSOM080	45,89	47,24	50,65	53,03
Wall bracket 125-200	IOSWM+ IWSOM125	49,62	50,98	54,38	56,76
Flat locking band	AOZWM	20,40	21,00	22,20	23,40
Roof support	IOPD	45,12	46,97	50,99	53,46
Iznsulation L200 G50	IZOLACJA L200G50	40,00			
Iznsulation L600 G100	IZOLACJA L600G100	70,00			
Flexible moisture barrier 500x470	DSM50X470	30,00			
Sub-roof bushing	IBKF	31,96	38,14	45,55	56,86
One-part round rosette 0 G50	WRMM	20,52	20,74	21,86	22,21
Two-part round rosette 0-5 G50	WRMN0	21,60	22,334	23,01	23,38
Two-part round rosette 5-20 G50	WRMN15	21,80	22,27	24,74	25,36
Two-part round rosette 20-35 G50	WRMN30	22,80	23,20	27,84	29,07
Two-part round rosette 35-50 G50	WRMN45	25,80	26,29	34,05	37,11
One-part round rosette 0 G100	WRMA	26,22	28,50	34,96	39,66
Two-part round rosette 0-5 G100	WRMNA0	27,60	30,00	36,80	41,75
Two-part round rosette 5-20 G100	WRMNA15	33,60	36,49	38,97	43,92
Two-part round rosette 20-35 G100	WRMNA30	30,00	33,53	41,44	48,25
Two-part round rosette 35-50 G100	WRMNA45	32,40	38,35	42,99	49,48
Chimney suspension rods	JUKA	28,20			
Rosette gasket (1meter)	LIN00835	5,00			

	Index	130	150	180	200
Adapter 118	AIESM118/13	53,25			
Adapter 120	AIESM120/13	53,25			
Adapter 128	AIESM128/XXX	38,60	54,00		
Adapter 130	AIESM130/XXX	38,60	54,00		
Adapter 148	AIESM148/XXX		39,95	55,50	
Adapter 150	AIESM150/XXX		39,95	55,50	
Adapter 178	AIESM178/XXX			40,70	57,75
Adapter 180	AIESM180/XXX			40,70	57,75
Adapter 198	AIESM198/200				42,20
Adapter 200	AIESM200/200				42,20

 **Notes:**





Jawar Sp. z o.o
Sońska 89
06-400 Ciechanów, Poland
+48 (023) 672 24 16, 673 54 00
E-mail: handel@jawar.com.pl
www.jawar.com.pl

Perlite Production Factory Jawar
Zygmuntowo 1c
06-450 Głinojeck
Poland