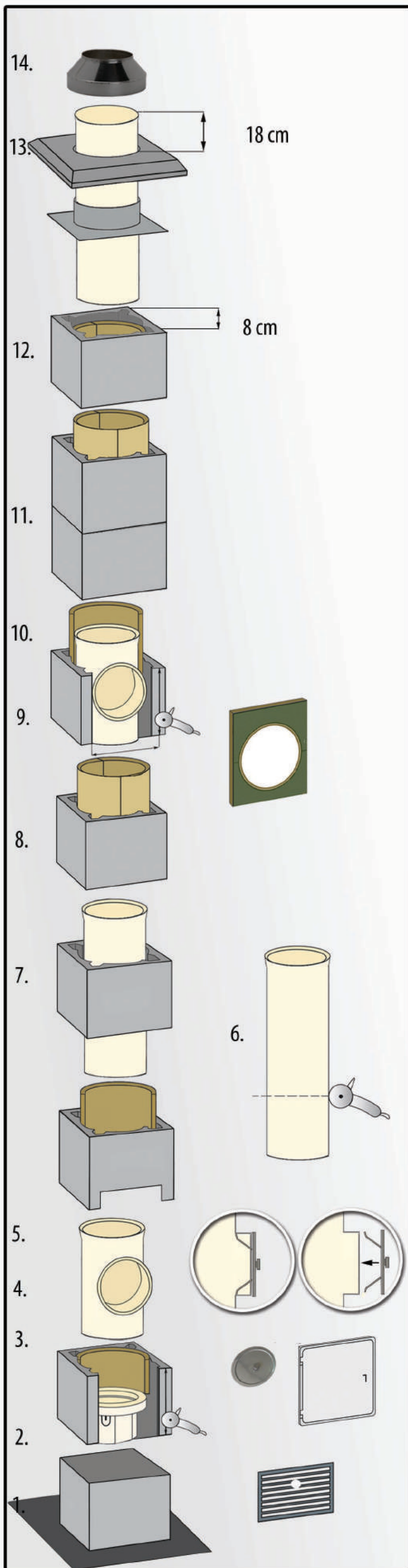


JAWAR UNIWERSAL PLUS INSTALLATION INSTRUCTIONS

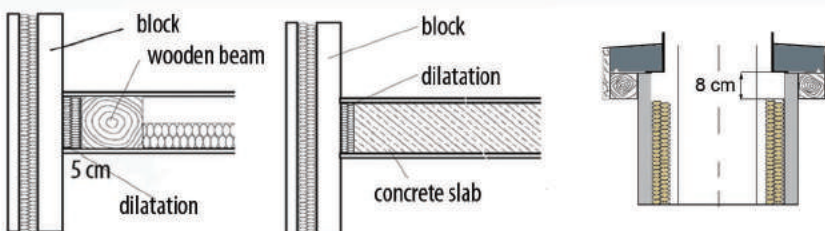


16. Cut the last pipe, so that it outstands 15cm over the cover plate (the bell part should be cut off). Mount the pipe. Seal the joint between the cover plate and the formwork, using roofing silicone. Mount the end cone stabilizer 7cm below the top of the last pipe. Tighten the adjustment on the stabilizer. Put silicone on the top of the pipe. Mount the end cone, until you hear a click.



15. Mount the last block and mount the formwork on it. Next mount the cover plate or make it yourself.

14. In the last block of wool, shorten the wool by 8 cm.

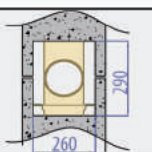


Attention: Remember the dilatation

13. Mount next blocks, pipes and wool until the designed chimney height is reached

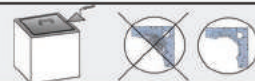
12. Put the first cut block in the place of the tee montage, insert the wool as in p. 5. Then mount the tee and put the second cut blocks. Insert the wool into the block. Connect the boiler's flue with the chimney in a permanent way or using the connector fig.2

11. Cut an opening size 160x290mm in block(s) on the determined height of the gas connection.



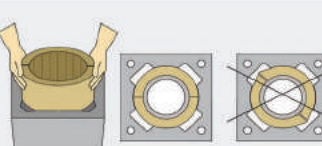
10. Determine the place of the montage of the gas tee. for an established place of the montage of the tee, measure and cut the ceramic pipe to the appropriate height and install a suitable number of hollow blocks.

9. Using the template, apply the mortar and install another block and wool.

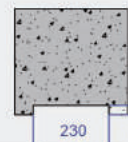


8. Clean the bell end of the tee. Protect the condenser from building dirt (cover the bottom with foil or foamed polystyrene). Put kit into the bell end of the tee.

7. Mount the third block. Make sure that mortar excess will not block the air channels. Insert the insulation in the installed block, so that the joint does not block the ventilation channels.



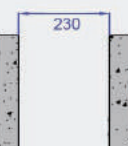
6. In the third block, cut the hole according to the drawing. Then prepare acid-proof putty according to instructions on the packaging. Use a damp sponge to clean the condenser and tee. Use stencil to put mortar onto the second block. Put the putty on the condensate tray and mount the tee, remembering to center it. Clean the tray with a moist sponge.



5. Install the insulation in the second block as shown in the figure (up to the level of the condensate tray). The insulation protruding above the block should be cut off.



4. Cut an opening 230x330mm in the second block. When the sole is solid, place the second block using a mortar. On the sole place the condensate tray. Attention!!! The condensate tray should be levelled and centered in the block. The condensate outlet should be placed towards the opening in the block. Clean the tray with a moist sponge.

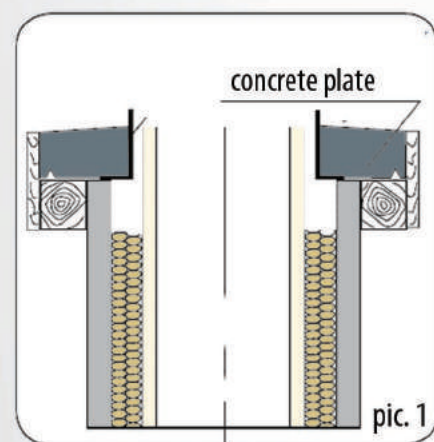


3. Place the first block. Fill the block with concrete to make a chimney socle

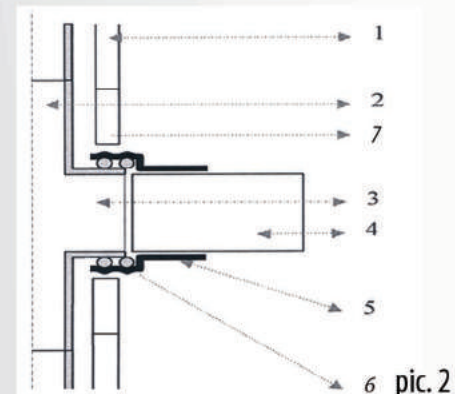
2. Make a water-tight insulation. Remember to consider "0" level.

1. Make a concrete foundation under the planned chimney.

Manual installation of cover plate

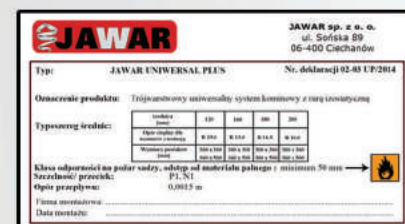


MONTAGE OF CONNECTOR JAWAR-ACCESSORIES



1. Wall of chimney block.
2. Ceramic pipe
3. place of the exhaust outlet to the chimney
4. Steel pipe connecting the boiler with the chimney
5. JAWAR- ceramic and steel pipe connector
6. Connector component – Bond with rope
7. Faceplate

After finishing the montage, fill in the nameplate and place it in a visible place. Fill out the warranty card.



FOR THE CHIMNEY INSTALLATION WE NEED:



Attention: Before you start installation, read the instruction, check the installation packet content. After finishing installation, plaster the chimney using 1,5cm plaster and mount all the necessary accessories.

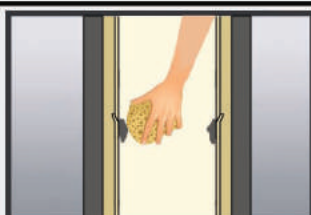
General rules of joining ceramic elements:



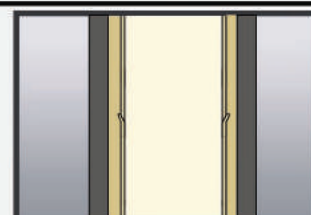
Clean the pipe edge using a moist sponge.



Put the right amount of silicone into the pipe bell.



Remove excess silicone from the joined pipes using the tool for smoothing joints.



Correctly joined pipes without excess silicone inside.