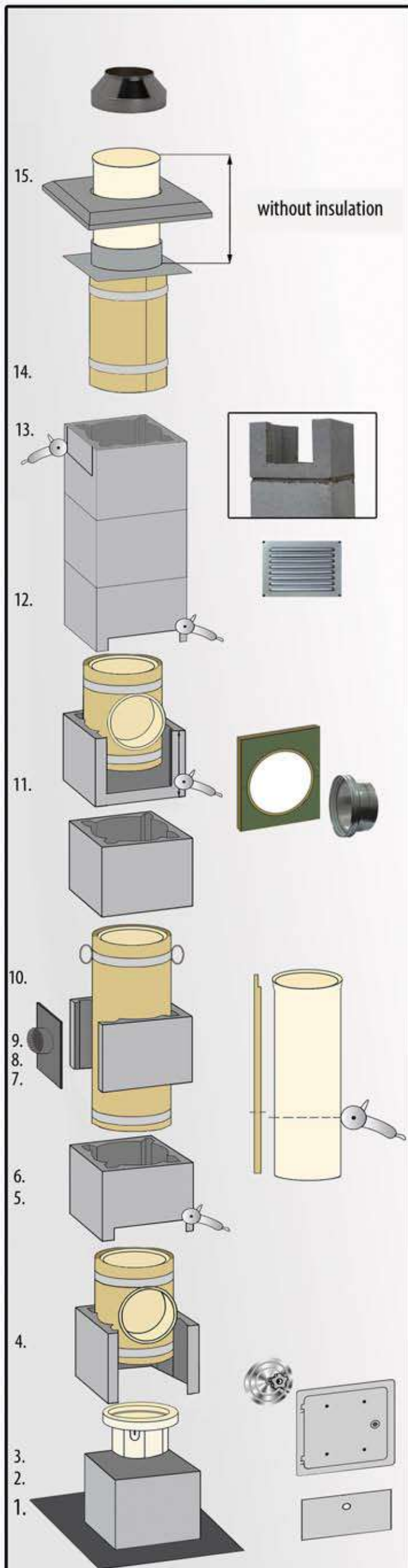


JAWAR NORD INSTALLATION INSTRUCTIONS



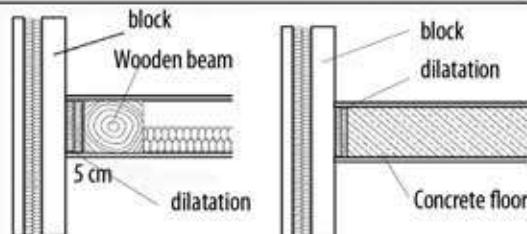
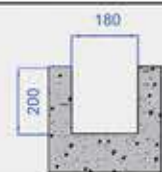
After finishing the montage, fill in the nameplate and place it in a visible place.

15. Cut the last pipe, so that it outstands 15cm over the cover plate (the bell part should be cut off). Mount the pipe. Seal the joint between the cover plate and the formwork, using roofing silicone. Mount the end cone stabilizer 7cm below the top of the last pipe. Tighten the adjustment on the stabilizer. Put silicone on the top of the pipe. Mount the end cone, until you hear a click.



14. Mount the block and a formwork on it, using mortar. Next, mount the cover plate or make it yourself.

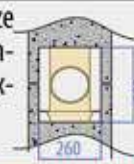
13. Before the last block is mounted, cut two openings size 180x200mm for air checks (in opposite walls of the block).



Attention: Remember about dilatation

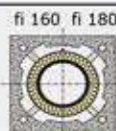
12. Mount next blocks and pipes until the designed chimney height is reached.

11. Determine the height of the connection. Cut an opening size 260x290mm in block(s) on the determined height of the gas connection. If needed to shorten the pipe, cut the insulation approximately 1 cm in relation to the pipe.



Attention: connect the boiler's flue with the chimney in a permanent way or using the connector fig.2

10. Mount the pipe as in picture. Remove excess putty.



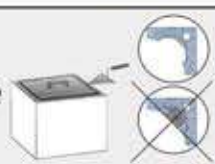
9. Mount next two blocks using the stencil. Make sure that mortar excess will not block the air channels.

8. Clean the bell end of the tee and put acid-proof putty into it.

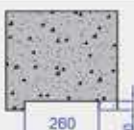
7. Cut an opening 160x200 in the fourth block. pod przyłącze powietrza. Attention!!! The air connection can be mounted at a different height.



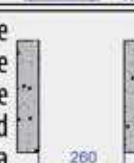
6. Use stencil to put mortar onto the second block. Clean the tray and condensate tray with a moist sponge. Mount the tee on the condensate tray. Mount the third block. Make sure that mortar excess will not block the air channels.



5. Cut an opening 260x30 in the third block, according to the drawing. Prepare acid-proof putty according to instructions on the packaging



4. Cut an opening 260x330mm in the second block. When the socle is solid, place the second block using a mortar. On the socle place the condensate tray. Attention!!! The condensate tray should be levelled and centered in the block. The condensate outlet should be placed towards the opening in the block. Clean the tray with a moist sponge.

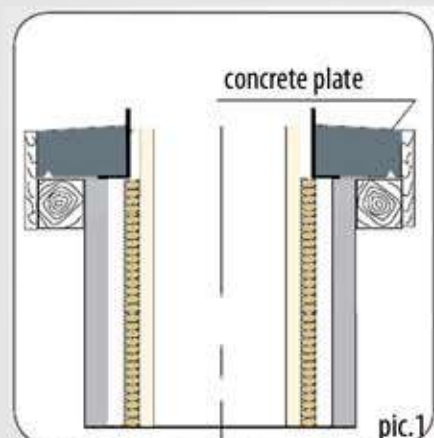


3. Place the first block. Fill the block with concrete to make a chimney socle.

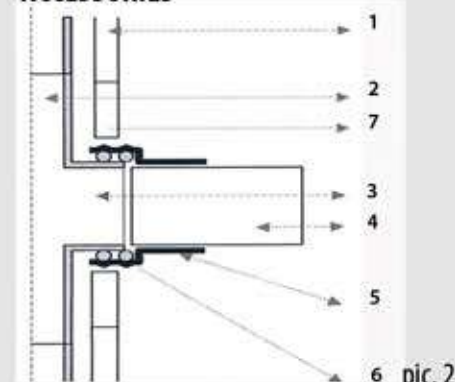
2. Make a water-tight insulation. Remember to consider "0" level.

1. Make a concrete foundation under the planned chimney.

Manual installation of cover plate

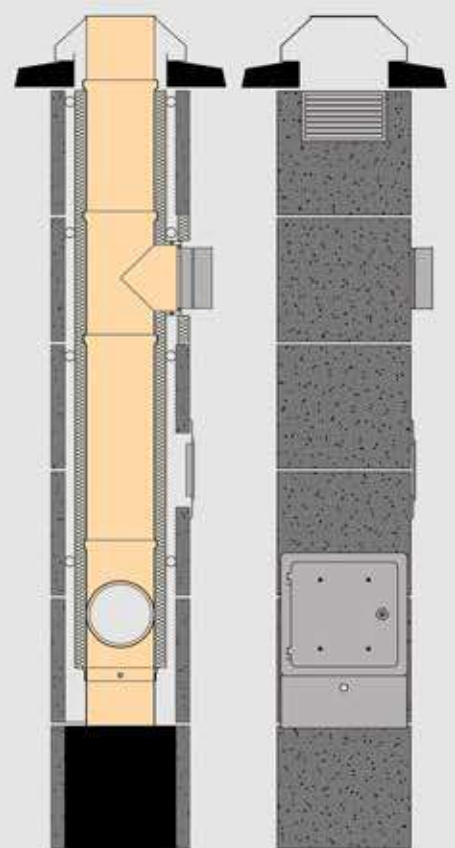


MONTAGE OF CONNECTOR JAWAR-ACCESSORIES

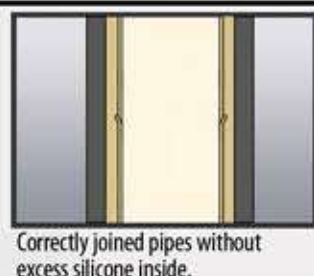


1. Wall of chimney block.
2. Ceramic pipe
3. place of the exhaust outlet to the chimney
4. Steel pipe connecting the boiler with the chimney
5. JAWAR- ceramic and steel pipe connector
6. Connector component – Bond with rope
7. Faceplate

FOR THE CHIMNEY INSTALLATION WE NEED:



General rules of joining ceramic elements:



Attention: Before you start installation, read the instruction, check the installation packet content. After finishing installation, plaster the chimney using 1,5cm plaster and mount all the necessary accessories.