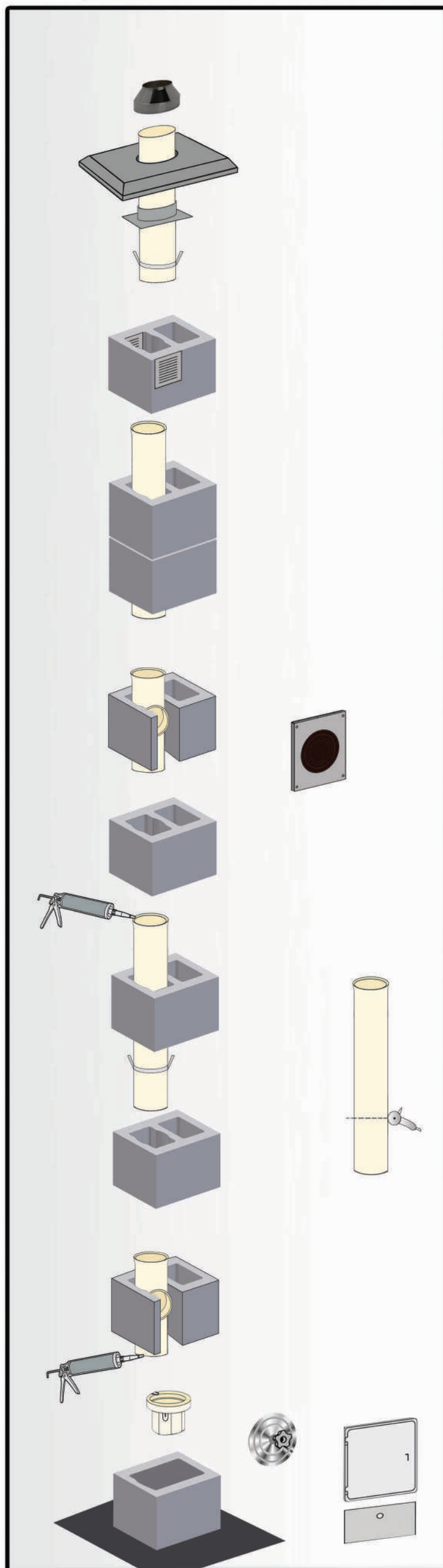
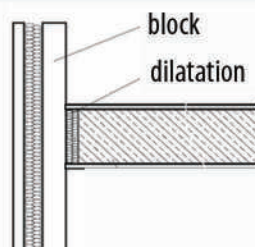


JAWAR K 80 INSTALLATION INSTRUCTIONS



18. Cut the last pipe, so that it outstands 15cm over the cover plate (the bell part should be cut off). Mount the pipe. Seal the joint between the cover plate and the formwork, using roofing silicone. Mount the end cone stabilizer 7cm below the top of the last pipe. Tighten the adjustment on the stabilizer. Put silicone on the top of the pipe. Mount the end cone, until you hear a click.



Attention: Remember about dilatation

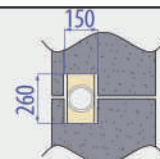
17. Mount the last block and mount the formwork on it. Next mount the cover plate or make it yourself.

16. Before the last block is mounted, cut two openings size 80x150mm for air checks (in opposite walls of the block).

15. Mount next blocks and pipes until the designed chimney height is reached.

14. If needed, cut one of the pipes, so that the tee outlet will be on the right height. Attention!!! The tee outlet axis should coincide with the axis of the cut opening.

13. Cut an opening size 150x260mm in block(s) on the determined height of the gas connection.



12. Mount next blocks and pipes until the desired gas connection height is reached

11. Use technical documentation to determine the height of the gas connection.

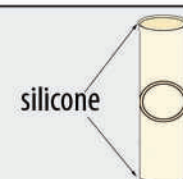
10. Clean and dry the smooth end of the pipe. Mount the pipe according to the drawing below. Remove excess silicone using the tool for smoothing joints.



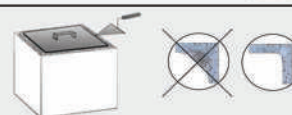
9. Mount a stabilizer onto the smooth end of a pipe. Fix it so that it will not move. Attention!!! The stabilizer should be mounted onto every pipe.

8. Mount next two blocks using the stencil. Make sure that mortar excess will not block the air channels.

7. When the condensate tray and inspection tee are dry, put silicone onto the smooth end of the tee. Next, mount the tee on the condensate tray. Remove silicone excess and smoothen the joint. Put silicone onto the bell end of the tee.

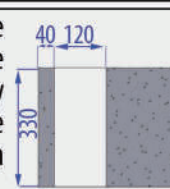


6. Use stencil to put mortar onto the second block.



5. Prepare the inspection tee for installation. Clean both ends of the tee with a moist sponge.

4. Cut an opening 120x330mm in the second block. When the socle is solid, place the second block using a mortar. On the socle place the condensate tray. Attention!!! The condensate tray should be levelled and centered in the block. The condensate outlet should be placed towards the opening in the block. Clean the tray with a moist sponge.

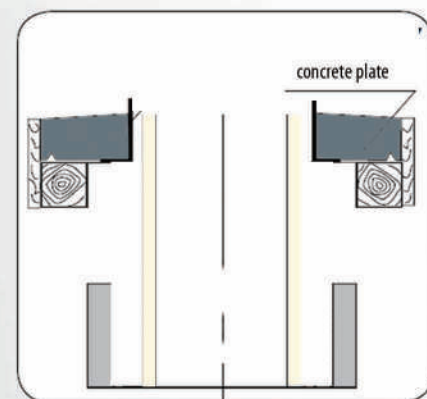


3. Place the first block. Fill the block with concrete to make a chimney socle.

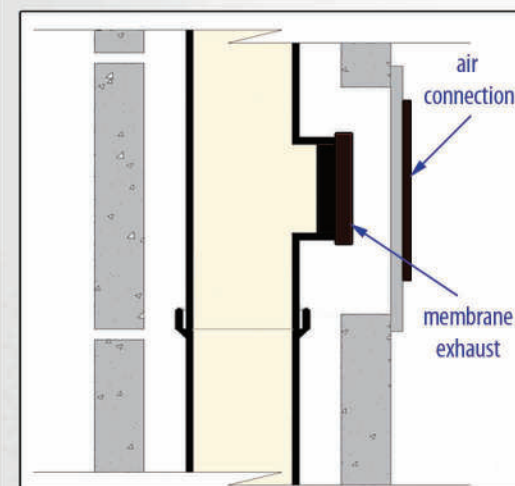
2. Make a water-tight insulation. Remember to consider "0" level.

1. Make a concrete foundation under the planned chimney.

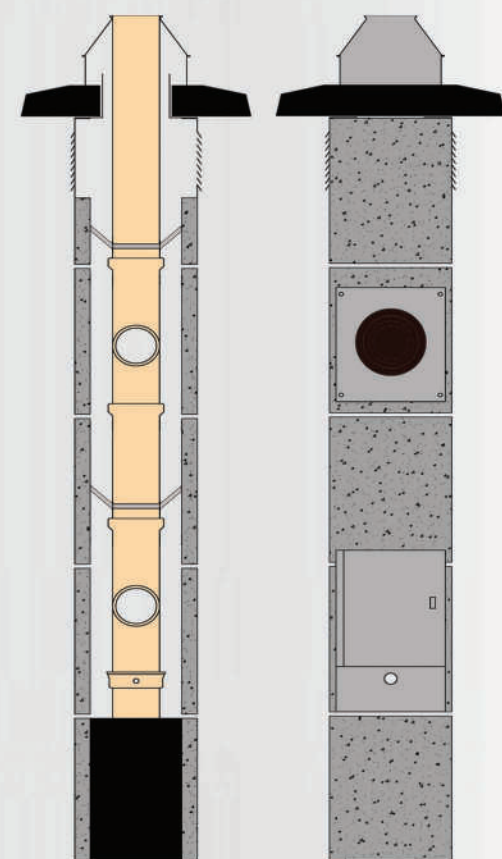
Manual installation of cover plate



Exhaust connections



FOR THE CHIMNEY INSTALLATION WE NEED:



Attention: Before you start installation, read the instruction, check the installation packet content. After finishing installation, plaster the chimney using 1,5cm plaster and mount all the necessary accessories.

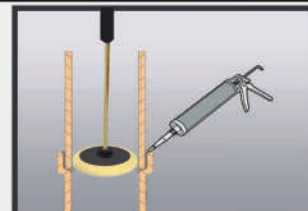
General rules of joining ceramic elements:



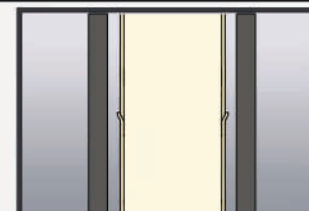
Clean the pipe edge using a moist sponge.



Put the right amount of silicone into the pipe bell.

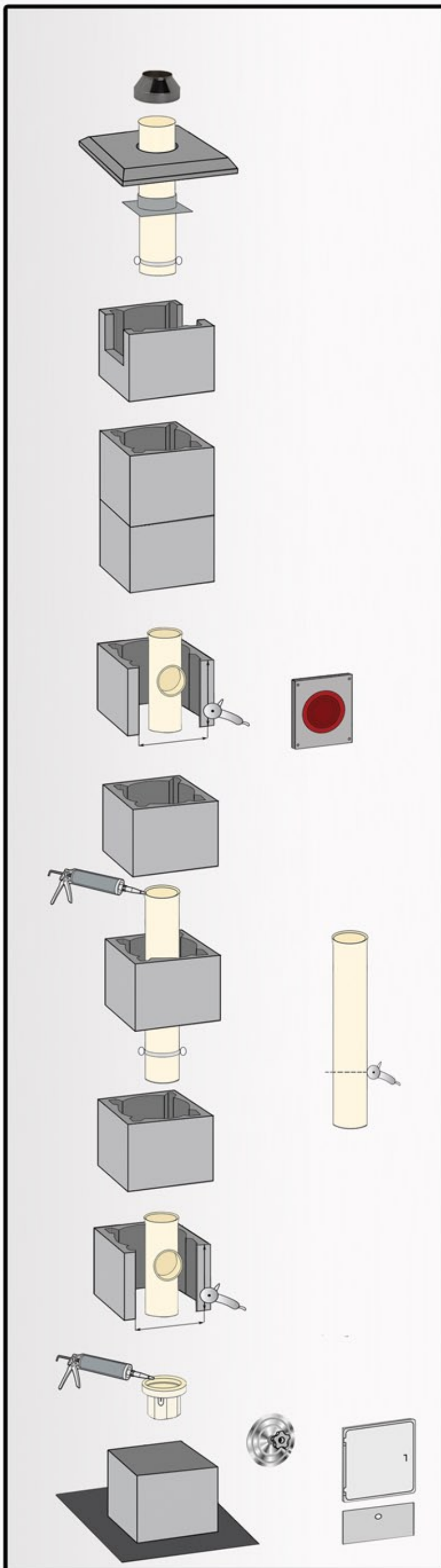


Remove excess silicone from the joined pipes using the tool for smoothing joints.

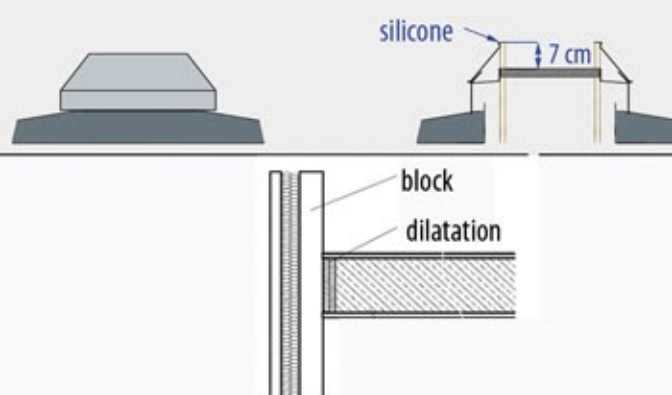


Correctly joined pipes without excess silicone inside.

JAWAR K 120 INSTALLATION INSTRUCTIONS

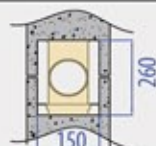


18. Cut the last pipe, so that it outstands 15cm over the cover plate (the bell part should be cut off). Mount the pipe. Seal the joint between the cover plate and the formwork, using roofing silicone. Mount the end cone stabilizer 7cm below the top of the last pipe. Tighten the adjustment on the stabilizer. Put silicone on the top of the pipe. Mount the end cone, until you hear a click.

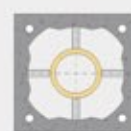


Attention: Remember about dilatation

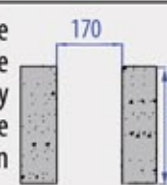
- 17. Mount the last block and mount the formwork on it. Next mount the cover plate or make it yourself.
- 16. Before the last block is mounted, cut two openings size 80x150mm for air checks (in opposite walls of the block).
- 15. Mount next blocks and pipes until the designed chimney height is reached.
- 14. If needed, cut one of the pipes, so that the tee outlet will be on the right height. Attention!!! The tee outlet axis should coincide with the axis of the cut opening.
- 13. Cut an opening size 150x260mm in block(s) on the determined height of the gas connection.



- 12. Mount next blocks and pipes until the desired gas connection height is reached.
- 11. Use technical documentation to determine the height of the gas connection.
- 10. Clean and dry the smooth end of the pipe. Mount the pipe according to the drawing below. Remove excess silicone using the tool for smoothing joints.

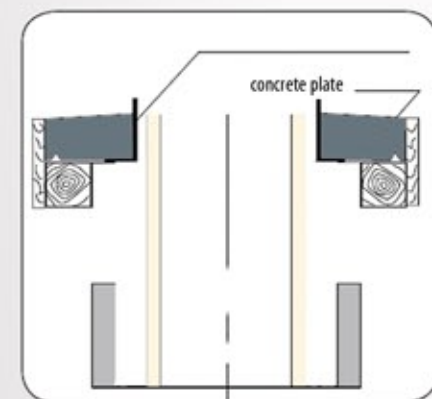


- 9. Mount a stabilizer onto the smooth end of a pipe. Fix it so that it will not move. Attention!!! The stabilizer should be mounted onto every pipe.
- 8. Mount next two blocks using the stencil. Make sure that mortar excess will not block the air channels.
- 7. When the condensate tray and inspection tee are dry, put silicone onto the smooth end of the tee. Next, mount the tee on the condensate tray. Remove silicone excess and smoothen the joint. Put silicone onto the bell end of the tee.
- 6. Use stencil to put mortar onto the second block.
- 5. Prepare the inspection tee for installation. Clean both ends of the tee with a moist sponge.
- 4. Cut an opening 170x330mm in the second block. When the socle is solid, place the second block using a mortar. On the socle place the condensate tray. Attention!!! The condensate tray should be levelled and centered in the block. The condensate outlet should be placed towards the opening in the block. Clean the tray with a moist sponge.

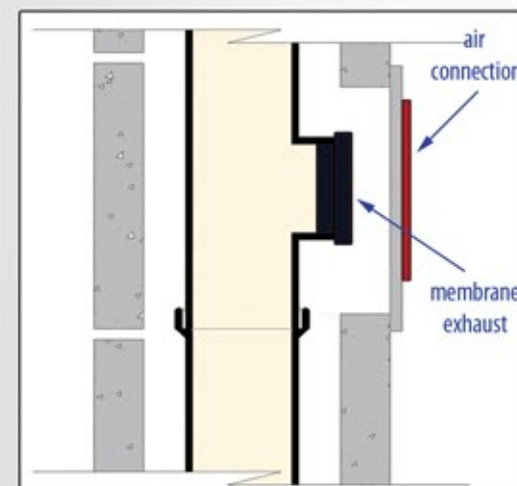


- 3. Place the first block. Fill the block with concrete to make a chimney socle.
- 2. Make a water-tight insulation. Remember to consider "0" level.
- 1. Make a concrete foundation under the planned chimney.

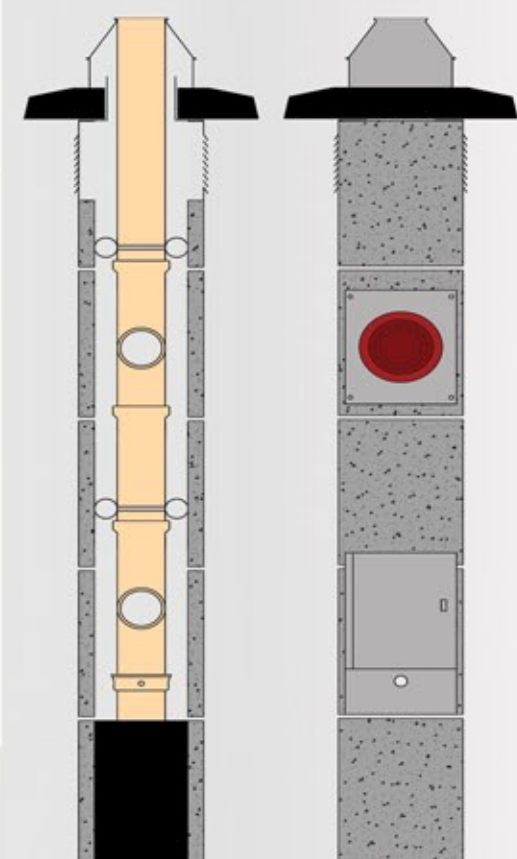
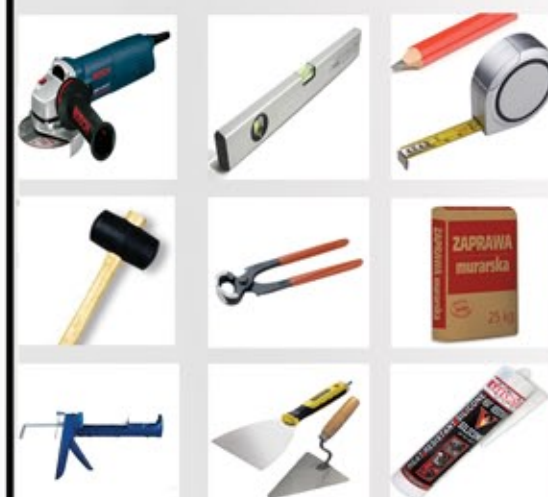
Manual installation of cover plate



Exhaust connections



FOR THE CHIMNEY INSTALLATION WE NEED:



Attention: Before you start installation, read the instruction, check the installation packet content. After finishing installation, plaster the chimney using 1,5cm plaster and mount all the necessary accessories.

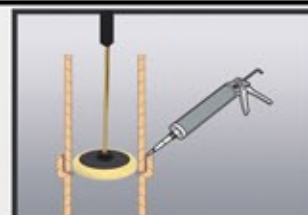
General rules of joining ceramic elements:



Clean the pipe edge using a moist sponge.



Put the right amount of silicone into the pipe bell.



Remove excess silicone from the joined pipes using the tool for smoothing joints.



Correctly joined pipes without excess silicone inside.