

JAWAR

CHIMNEY

CATALOG 2021



Chimney systems
Ceramic chimneys



made in Poland

Modern chimneys and ventilation

SAFETY AND ENERGY SAVING IN CHIMNEY TECHNOLOGY

JAWAR is a manufacturer of chimneys and ventilation systems with 30-year experience. Our products are distinguished by their safety of use and the possibility of effective heat recovery. JAWAR is among the leading chimney manufacturers, constantly introducing innovations, keeping pace with the modern technologies and market needs.

In two production facilities located in central Poland, we manufacture hundreds of kilometers of new chimneys every year. Our product range involves the widest on the Polish market choice of block chimney systems with isostatic ceramics and perlite blocks, ventilation chimneys, as well as stainless steel chimneys and chimney liners. The long experience of the company, connected with innovation, guarantee our customers satisfaction of their purchase.

JAWAR, as one of the few companies in Europe, introduced production of the most modern chimney pipes, manufactured in the technology of isostatic pressing. Chimneys equipped with these pipes are distinguished by easy and fast installation, high resistance to acids, high temperatures and mechanical load.

As the first chimney producer in Europe, JAWAR has introduced chimney and ventilation blocks made of expanded perlite. Using this innovative material in the chimney technology leads to better insulation of chimney, increases the safety of operation and significantly shortens the time of chimney installation.

Our product range is distinguished by the presence of chimney and ventilation systems with heat recovery. We take care of the environment and help our customers save money! This solution is applied to the block chimneys JAWAR NORD, to the stainless steel chimneys JAWAR AERO and ventilation system JAWAR ATMO.

We have our own R&D department. Our team of engineers is constantly working on improving the products and adjusting them to the growing requirements of modern technology. JAWAR, as a socially responsible organization, is investing in solutions that lead to improving the air quality, for the sake of us all.

CEO
dr Paweł Jarzyński

Jawar sp z o.o.

CIECHANÓW

ul. Sońska 89
06-400 Ciechanów



**Perlite Production
Factory Jawar**

GLINOJECK

Zygmuntowo 1c
06-450 Glinojek



Isostatic ceramics

JAWAR ceramic pipes are manufactured using the innovative technology of isostatic pressing. They are distinguished by ultimate durability and safety of operation.



Pipe JR	Diameter [cm]	Height [cm]	Tee JT	Diameter [cm]	Height [cm]
	ø 8 ø 12 ø 14 ø 16 ø 18 ø 20	66		ø 8 ø 12 ø 14 ø 16 ø 18 ø 20 ø 25/20	33
	ø 25	33		ø 25	66

* acceptable dimensional deviation in accordance with EN 1457

ADVANTAGES OF ISOSTATIC CERAMICS

Properties	traditional technology	Isostatic pressing technology
Resistance to thermal shock	✗	✓
Resistance to soot fire	✓	✓
Low moisture absorption	✗	✓
Resistance to corrosion	✓	✓
Low thermal capacity	✗	✓
Designed to dry and wet flues	✗	✓
High tightness of pipes connection – muff connection	✗	✓
Corrugations on outer surface of pipe – energy saving based on a heat exchanger	✗	✓
Tee (T-Pipe) as uniform single-element (not glued)	✗	✓

Ceramic cone

NEW!

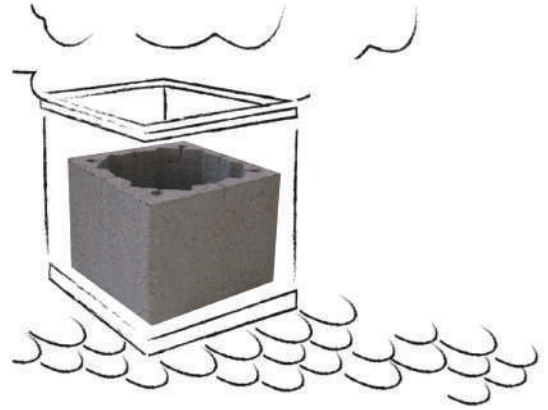
- Corrosion resistant
- Waterproof
- Frost-resistant



Perlite blocks

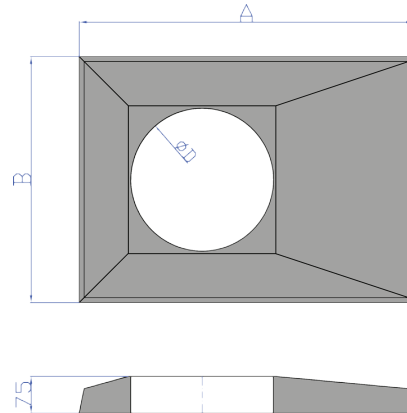
Perlite is a volcanic rock of natural origin. It is a very light material so that the weight of chimney blocks is about 20-30% lower than traditional blocks. Perlite is also material twice more thermal insulated than expanded clay, so our chimney systems have a much better heat transfer coefficient than previously used blocks

- Reinforced with polypropylene microfibers
- Easy assembly
- Precise edges - the possibility of joining with glue
- High thermal insulation
- Resistant to high temperatures
- Small weight
- Chemically neutral
- Easy to plaster
- Ecological product, made of natural raw materials
- Two channels perlite block - **NEW**



Cover plates

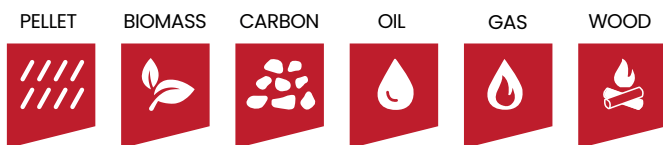
- system solution
- quick and easy assembly
- frost resistant
- low moisture absorption
- reinforced
- allows further chimney finishing



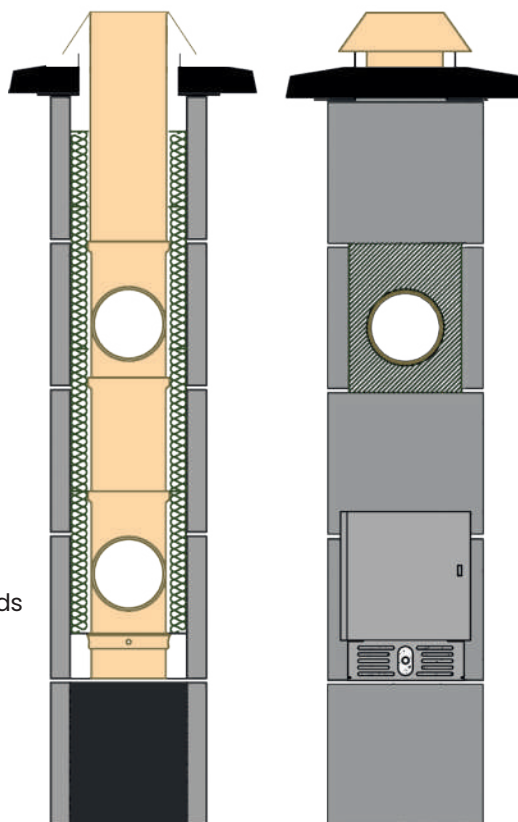
SYMBOL Dimension	CPL2W16	CPL2W 16-20	JPLW8	JPL8	JPLW12	CPL2W16	CPL2W 18-20	JPLW12	CPLW16	CPLW 18-20	JPL2W12
A	680	680	500	380	680	680	680	640	640	640	680
B	500	500	380	340	500	500	500	500	500	500	500
ø D	250	290	140	140	180	250	290	180	250	290	180

Jawar Uniwersal Plus

Three-layer chimney system designed to exhaust gases from devices run on all types of fuels.

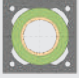


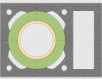
- Designed to exhaust fumes in range of temperatures 60-600°C
- Insulated on full length of chimney
- Isostatic ceramics resistant to corrosion
- Light blocks, made of perlite-concrete
- High tightness of pipes connection - muff connection
- Corrosion and condensate resistance class W3
- Resistant to sootfire
- Chimney system marked with CE according to standards
EN 13063-1 T600 NI D 3 G50
EN 13063-2 T400 NI W 3 O00
EN 13063-3 T600 NI D 3 G50
EN 13063-3 T400 NI W 3 O00

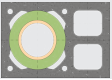


One channel	Diameter [cm]	Measure [cm]	Weight [kg/mb]	With Ventilation	Diameter [cm]	Measure [cm]	Weight [kg/mb]
	ø 16	36x36x33	78		ø 16+W	50x36x33	101
	ø 18	36x36x33	79		ø 18+W	50x36x33	102
	ø 20	36x36x33	79		ø 20+W	50x36x33	102
	ø 25	48x48x33	141		ø 16+2W	54x36x33	118
	16-20	68x36x33	147-150		ø 18+2W	54x36x33	119
					ø 20+2W	54x36x33	119

Price list Jawar Uniwersal Plus

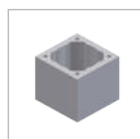
One channel		The total height of the chimney										Additional		
		4mb	5mb	6mb	7mb	8mb	9mb	10mb	11mb	12mb	13mb	+0,33	+0,66	cover plate
∅	measure [cm]	EUR	EUR	EUR	EUR	EUR	EUR	EUR	EUR	EUR	EUR	EUR	EUR	EUR
16	36x36x33	314	380	431	497	548	624	675	741	806	873	28	39	26,00
18	36x36x33	321	389	441	509	560	638	689	757	824	892	28	40	26,00
20	36x36x33	331	401	453	522	575	654	707	777	846	916	29	40	26,00
25	48x48x33	588	688	789	889	989	1109	1209	1309	1409	1509	33	67	-

With ventilation		The total height of the chimney										Additional		
		4mb	5mb	6mb	7mb	8mb	9mb	10mb	11mb	12mb	13mb	+0,33	+0,66	cover plate
∅	measure [cm]	EUR	EUR	EUR	EUR	EUR	EUR	EUR	EUR	EUR	EUR	EUR	EUR	EUR
16	50x36x33	347	421	481	555	613	698	757	832	906	981	29	44	30,00
18	50x36x33	355	430	490	566	626	712	772	848	923	1000	30	45	30,00
20	50x36x33	364	441	502	580	641	729	790	867	945	1022	31	46	30,00

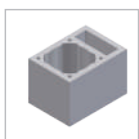
With double ventilation		The total height of the chimney										Additional		
		4mb	5mb	6mb	7mb	8mb	9mb	10mb	11mb	12mb	13mb	+0,33	+0,66	cover plate
∅	measure [cm]	EUR	EUR	EUR	EUR	EUR	EUR	EUR	EUR	EUR	EUR	EUR	EUR	EUR
16	54x36x33	368	449	513	594	658	748	812	893	973	1052	31	48	32,00
18	54x36x33	376	458	524	605	670	762	827	908	990	1072	32	49	32,00
20	54x36x33	386	469	535	619	685	778	845	928	1011	1094	32	49	32,00

Additional accessories - p. 15

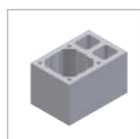
The price includes:



block



block with ventilation



block with double ventilation



tee 90



inspection unit



Isostatic pipes



insulation

and installation package:



chimney door



condensate tray with drain pipe



frontplate



end cone



ventilation check



mortar template



pipe glue



locking plug

Jawar Nord

Four-layer chimney system designed to exhaust gases from devices run on solid fuels in energy-efficient construction.

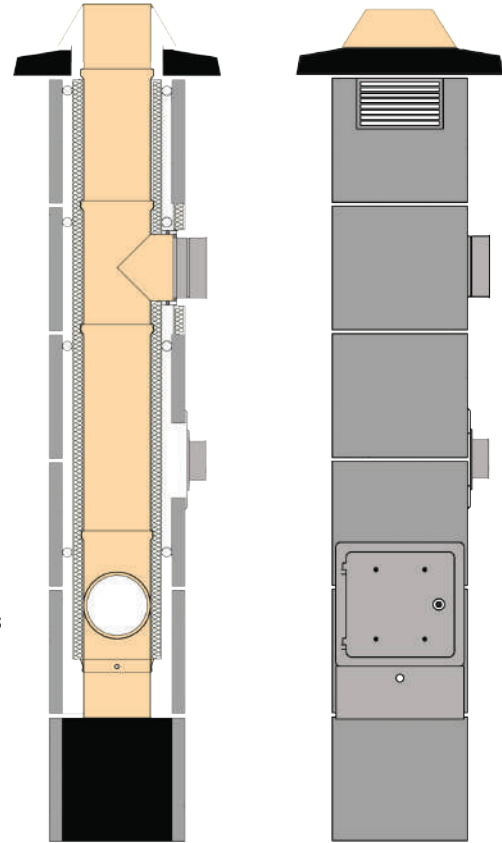
PELLET



WOOD




- Pre- insulated pipes delivered to customer
- First Polish block chimney designed to exhaust gases and supply air to fireplaces
- Does not require any additional air supply from outside of building
- Designed to exhaust gases in range of temperatures 60-600°C
- The only chimney system in Poland, which may be placed next to flammable components (T400 G00)
- Resistant to sootfire
- Chimney system marked with CE according to standards
EN 13063-1 T600 NI D 3 G50
EN 13063-1 T400 NI D 3 G00
EN 13063-3 T600 NI D 3 G50
EN 13063-3 T400 NI D 3 G00

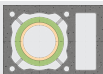


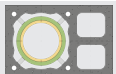
	One channel	Diameter [cm]	Measure [cm]	Weight [kg/mb]	With Ventilation	Diameter [cm]	Measure [cm]	Weight [kg/mb]
		ø 16	36x36x33	76		ø 16+W	50x36x33	99
		ø 18	36x36x33	78		ø 18+W	50x36x33	101
		ø 20	40x40x33	89		ø 20+W	54x40x33	104
						ø 16+2W	54x36x33	117
						ø 18+2W	54x36x33	120



Price list Jawar Nord

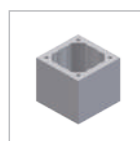
One channel		The total height of the chimney										Additional		
		4mb	5mb	6mb	7mb	8mb	9mb	10mb	11mb	12mb	13mb	+0,33	+0,66	cover plate
∅	measure [cm]	EUR	EUR	EUR	EUR	EUR	EUR	EUR	EUR	EUR	EUR	EUR	EUR	EUR
16	36x36x33	489	576	631	718	772	871	925	1013	1101	1188	40	47	25,00
18	36x36x33	504	597	653	743	800	901	956	1048	1139	1229	42	49	25,00
20	40x40x33	546	647	711	812	876	987	1051	1152	1253	1354	46	54	29,00

With ventilation		The total height of the chimney										Additional		
		4mb	5mb	6mb	7mb	8mb	9mb	10mb	11mb	12mb	13mb	+0,33	+0,66	cover plate
∅	measure [cm]	EUR	EUR	EUR	EUR	EUR	EUR	EUR	EUR	EUR	EUR	EUR	EUR	EUR
16	50x36x33	523	619	681	777	840	946	1008	1105	1200	1296	43	52	30,00
18	50x36x33	538	638	702	802	866	976	1040	1140	1239	1337	44	54	30,00
20	54x40x33	577	687	758	867	938	1057	1128	1238	1346	1454	48	59	34,00

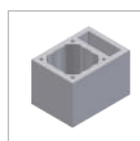
With double ventilation		The total height of the chimney										Additional		
		4mb	5mb	6mb	7mb	8mb	9mb	10mb	11mb	12mb	13mb	+0,33	+0,66	cover plate
∅	measure [cm]	EUR	EUR	EUR	EUR	EUR	EUR	EUR	EUR	EUR	EUR	EUR	EUR	EUR
16	54x36x33	544	646	714	815	884	996	1063	1164	1266	1367	45	56	32,00
18	54x36x33	561	666	736	840	910	1025	1095	1200	1305	1410	46	58	32,00

The price includes:

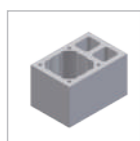
Additional accessories - p. 16



block



block with ventilation



block with double ventilation



tee NORD



inspection unit



Insulated pipes

and installation package:



bottom cover



chimney door insulated



frontplate



condensate tray with drain pipe



locking plug



end cone



pipe glue



mortar template



air check



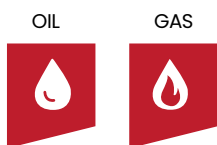
bond with rope



air connection

Jawar K

Double-layer chimney system designed to condensation and low-temperature boilers.



- For condensation and low-temperature boilers
- Designed to gas and oil boilers
- Possibility to work with a boiler with closed combustion chamber
- Maximum exhaust gas temperature 200°C
- Ability to work in overpressure
- For single-family and multifamily houses
- Low weight and dimensions
- Innovative ceramic elbow $\varnothing 8$ - **NEW!**

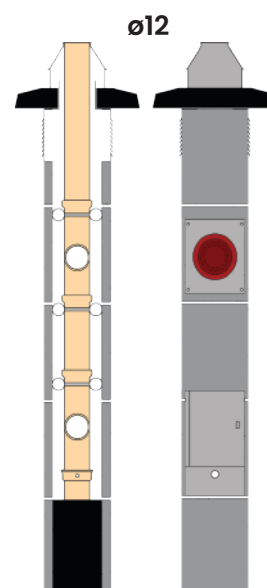
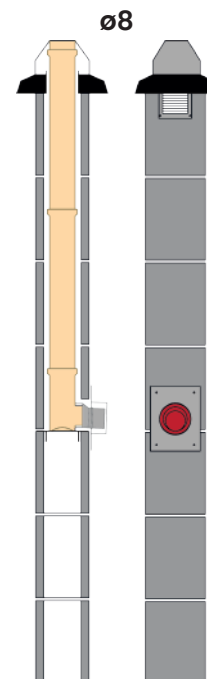
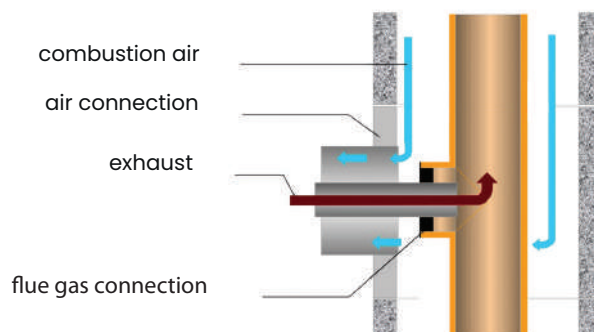
- Chimney system marked with CE according to standards

EN 13063-2 T200 NI W 3 O00

EN 13063-2 T200 PI W 3 O00

EN 13063-3 T200 NI W 3 O00

EN 13063-3 T200 PI W 3 O00



$\varnothing 8$	Diameter [cm]	Measure [cm]	Weight [kg/mb]	$\varnothing 12$	Diameter [cm]	Measure [cm]	Weight [kg/mb]
	$\varnothing 8$	20x24x33	37		$\varnothing 12$	36x36x33	72
	$\varnothing 8+W$	36x24x33	55		$\varnothing 12+W$	50x36x33	95
	$\varnothing 8+2W$	52x24x33	74		$\varnothing 12+2W$	54x36x33	112
	$\varnothing 8+3W$	68x24x33	105				

Price list Jawar K

ø 8		The total height of the chimney										Additional		
		4mb	5mb	6mb	7mb	8mb	9mb	10mb	11mb	12mb	13mb	+0,33	+0,66	cover plate
ø	measure [cm]	EUR	EUR	EUR	EUR	EUR	EUR	EUR	EUR	EUR	EUR	EUR	EUR	EUR
8	20x24x22	282	329	356	403	431	477	505	553	599	646	21	24	21,00
8	36x24x33	315	369	405	460	496	551	587	641	696	751	24	29	26,00
8	52x24x33	347	409	454	517	560	624	667	730	794	856	27	36	-
8	68x24x33	379	451	502	573	625	696	748	819	890	962	29	41	-

ø 8 The price includes:



ø 12		The total height of the chimney										Additional		
		4mb	5mb	6mb	7mb	8mb	9mb	10mb	11mb	12mb	13mb	+0,33	+0,66	cover plate
ø	measure [cm]	EUR	EUR	EUR	EUR	EUR	EUR	EUR	EUR	EUR	EUR	EUR	EUR	EUR
12	36x36x33	376	438	481	542	584	645	687	748	810	872	26	33	25,00
12	50x36x33	410	481	530	600	650	721	770	840	910	980	29	40	30,00
12	54x36x33	432	508	563	639	694	770	826	901	976	1052	31	43	32,00

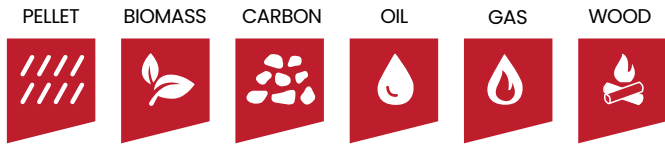
ø 12 The price includes:

Additional accessories - p.17

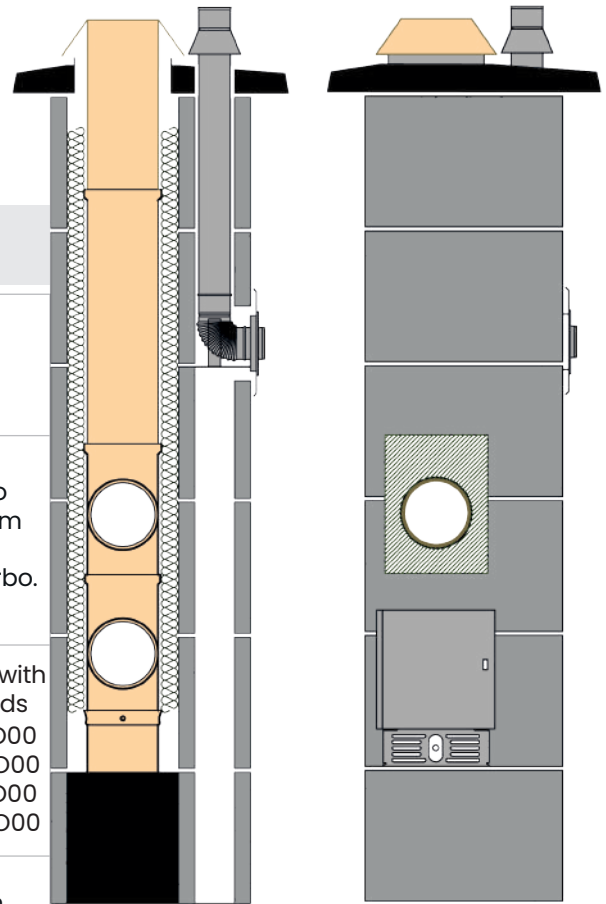


Jawar Kompakt

Ceramic and steel chimney system with a channel for removing fumes from traditional devices and with channel for condensing boilers.




Smoke channel	Gas channel
Temperature range 60-600°C	Temperature range 30-200°C
The ceramic part makes it possible to discharge flue gases from devices for all types of fuels.	The steel part is used to discharge flue gases from gas and oil boilers, condensing as well as Turbo.
Chimney system marked with CE according to standards : EN 13063- 1 T600 NI D 3 G50 EN 13063-2 T400 NI W 3 O00 EN 13063-3 T600 NI D 3 G50 EN 13063-3 T400 NI W 3 O00	Chimney system marked with CE according to standards EN 13063-2 T200 NI W 3 O00 EN 13063-2 T200 PI W 3 O00 EN 13063-3 T200 NI W 3 O00 EN 13063-3 T200 PI W 3 O00
Resistant to soot fire	Possibility of working in over-pressure up to 200 Pa



- Allows a wide choice of heating appliances in the boiler room
- Resistant to moisture and condensate
- Small weight and dimensions
- Easy and quick assembly

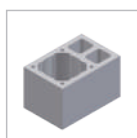
	Diameter [cm]	Measure [cm]	Weight [kg/mb]
	ø 16+W	54x36x33	120
	ø 18 + W	54x36x33	121
	ø 20 + W	54x36x33	121

Price list Jawar Kompakt

With ventilation		The total height of the chimney										Additional	
		4mb	5mb	6mb	7mb	8mb	9mb	10mb	11mb	12mb	13mb	+0,33	+0,66
∅	measure [cm]	EUR	EUR	EUR	EUR	EUR	EUR	EUR	EUR	EUR	EUR	EUR	EUR
16	54x36x33	490	592	675	777	860	972	1055	1157	1256	1358	45	69
18	54x36x33	497	601	684	788	872	986	1070	1174	1274	1378	45	69
20	54x36x33	506	612	697	803	887	1003	1087	1193	1295	1400	46	71

Additional accessories - p. 18

The price includes:



block with double ventilation



tee 90



inspection unit



isostatic pipes



insulation



steel pipe

and installation package:



chimney door



condensate tray with drain pipe



frontplate



end cone



ventilation check



mortar template



pipe glue



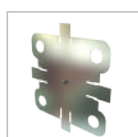
locking plug



air connection



upper chimney plate



bottom chimney plate



stabilizer



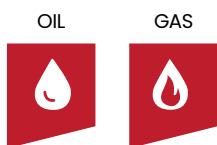
rain flange



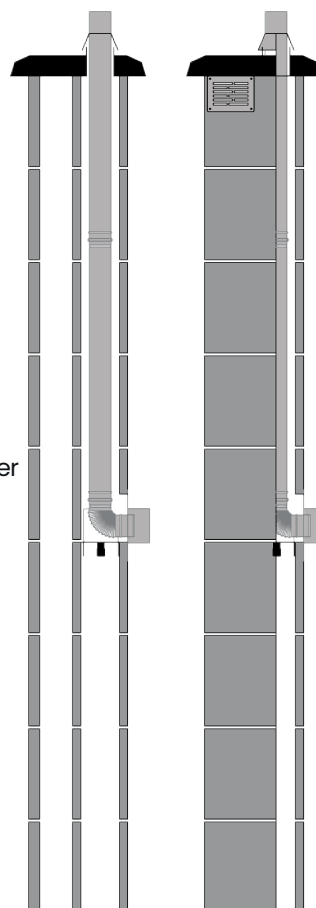
condensation elbow with a support

Jawar KS

Double-layer steel chimney system designed for condensing and low-temperature boilers



- For gas and oil boilers
- For condensing and low temperature boilers
- Possibility of cooperation with boilers with a closed combustion chamber
- Maximum exhaust temperature 200°C
- Possibility of working in hypertension and underpressure
- Small weight and dimensions
- For use in single-family and multi-family houses
- Chimney system marked CE in accordance with the standard PN-EN 1856-2:2009

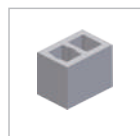


Typ of block		The total height of the chimney										Additional
ø 8		4mb	5mb	6mb	7mb	8mb	9mb	10mb	11mb	12mb	13mb	+0,50
	measure [cm]	EUR	EUR	EUR	EUR	EUR	EUR	EUR	EUR	EUR	EUR	EUR
8	20x24x22	158	188	215	245	271	301	328	359	385	419	18,00
8	36x24x33	190	228	263	301	336	374	409	448	483	521	23,00
8	52x24x33	222	269	312	358	401	448	486	536	579	626	29,00
8	68x24x33	255	310	360	415	465	521	571	626	676	731	35,00

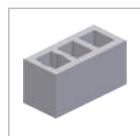
The price includes:



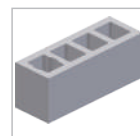
block for ø 80



chimney block for ø80 (24x36)



chimney block for ø80 (24x52)



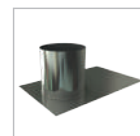
chimney block for ø80 (24x68)



rain flange



air connection



upper chimney plate



stabilizer



steel pipe



condensation elbow with a support

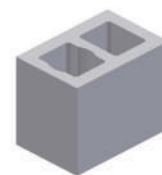


bottom chimney plate

Ventilation 33cm

Ventilation blocks are intended for construction of natural ventilation ducts. The blocks made of perlite-concrete are extraordinary light, with special insulation properties.

- Fire resistance class EI 120
- High acoustic insulation
- Does not require masonry, easy processing
- Compatible with chimney blocks
- Small size of development, quick and easy installation
- Very good thermal insulation and frost resistance
- Biological resistance prevents the growth of mold and fungi

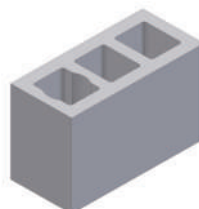


TWO-CHANNEL	
size:	36x24x33cm
weight:	17,25kg
internal channel:	12x16cm

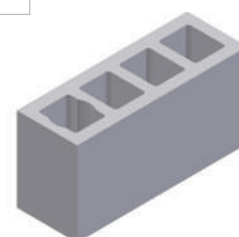


ONE-CHANNEL	
size:	20x24x33cm
weight:	11,25kg
internal channel:	12x16cm

THREE-CHANNEL	
size:	52x24x33cm
weight:	23,70kg
internal channel:	12x16cm



FOUR-CHANNEL	
size:	68x24x33cm
weight:	33,90kg
internal channel:	12x16cm



Price list

		The total height of the chimney									Additional
		1mb	2mb	3mb	4mb	5mb	6mb	7mb	8mb	9mb	± 0,33mb
Typ of blocks	Size [cm]	EUR	EUR	EUR	EUR	EUR	EUR	EUR	EUR	EUR	EUR
one-channel	20x24x33	8	16	24	31	40	48	56	64	73	2,68
two-channel	36x24x33	16	31	48	64	80	96	113	128	145	5,38
three-channel	52x24x33	24	48	73	96	121	145	169	193	218	8,07
four-channel	68x24x33	31	64	96	128	161	193	225	258	290	10,80

Block mortar

Heat-insulating, lightweight mortar dedicated for chimney and ventilation systems.

- Waterproof
- Frost resistant
- Strong
- Thermally tested
- For indoor and outdoor use

3,70/25kg



Example output:
chimney size 36x36- 7 mb
chimney size 36x50- 5 mb

Average output: 20m of joint (width 30mm, height 15mm)

Accessories Jawar Uniwersal Plus

No.	Index	Name	Unit	Price
1.	JDEKW160	Locking plug 160 insulated	pcs	21,25
2.	JDEKSI160	Locking plug 160 with rope	pcs	25,50
3.	JDEKW180	Locking plug 180 insulated	pcs	21,74
4.	JDEKSI180	Locking plug 180 with rope	pcs	25,98
5.	JDEKW200	Locking plug 200 insulated	pcs	22,25
6.	JDEKS200	Locking plug 200 with rope	pcs	26,62
7.	JDW	Jawar door	pcs	18,26
8.	CKW13x17	Air check13x17	pcs	2,73
9.	JCKW	Ventilation check	pcs	5,24
10.	KLEJ2	Pipe glue 2 kg	pcs	10,00
11.	JODS 140/160	Condensate tray 140/180 (with drain pipe)	pcs	14,12
12.	JODS 180/200	Condensate tray 180/200 (with drain pipe)	pcs	14,12
13.	JODS 250	Condensate tray 250 (with drain pipe)	pcs	29,39
14.	JOLP160	Insulation Uniwersal Plus 160 0,33m	pcs	4,48
15.	JOLP180	Insulation Uniwersal Plus 180 0,33m	pcs	4,63
16.	JOLP200	Insulation Uniwersal Plus 200 0,33m	pcs	4,74
17.	JOL250	Insulation Uniwersal Plus 250 0,33m	pcs	8,38
18.	JPUPP160	Installation package Uniwersal Plus 160	pcs	61,30
19.	JPUPP180	Installation package Uniwersal Plus 180	pcs	62,53
20.	JPUPP200	Installation package Uniwersal Plus 200	pcs	63,75
21.	JPUP250	Installation package Uniwersal Plus 250	pcs	129,55
22.	JPCUP	Frontplate 160-200	pcs	2,86
23.	CPC250	Frontplate 250	pcs	11,12

No.	Index	Name	Unit	Price
24.	CPL2W160	Cover plate 160+2W	pcs	33,10
25.	CPL2W180/200	Cover plate 180-200+2W	pcs	33,10
26.	CPL140/160	Cover plate 140-160	pcs	25,50
27.	CPLW140/160	Cover plate 140-160 + W	pcs	31,13
28.	CPL180/200	Cover plate 180-200	pcs	25,50
29.	CPLW180/200	Cover plate 180-200 + W	pcs	31,13
30.	CSZABLON	Mortar template 160-200	pcs	3,74
31.	CSZABLON250	Mortar template 250	pcs	4,51
32.	JSC160	Ceramic cone 160	pcs	23,78
33.	JSC180	Ceramic cone 180	pcs	24,02
34.	JSC200	Ceramic cone 200	pcs	24,27
35.	JR160 0,66	Isostatic pipe Jawar 160 0,66m	pcs	15,73
36.	JR180 0,66	Isostatic pipe Jawar 180 0,66m	pcs	16,20
37.	JR200 0,66	Isostatic pipe Jawar 200 0,66m	pcs	16,91
38.	JR250 0,33	Isostatic pipe Jawar 250 0,33m	pcs	15,66
39.	JT160 90 0,33	Isostatic T-Pipe Jawar 160 90 0,33m	pcs	19,57
40.	JT180 90 0,33	Isostatic T-Pipe Jawar 180 90 0,33m	pcs	20,90
41.	JT200 90 0,33	Isostatic T-Pipe Jawar 200 90 0,33m	pcs	22,41
42.	JT200 45 0,33	Isostatic T-Pipe Jawar 200,45 0,33m	pcs	50,26
43.	JT250 90 0,66	Isostatic T-Pipe Jawar 250,90 0,66m	pcs	70,04
44.	JT250 90 0,33	Isostatic T-Pipe Jawar 250,90 0,33m	pcs	47,52

Perlite block 33cm

No.	Index	Name	Unit	Price
1.	PPBW	Perlite chimney block 36x36	pcs	7,10
2.	PPBW250	Perlite chimney block 48x48	pcs	9,31
3.	PPBW2C	Perlite chimney block 68x36 (double channel)	pcs	14,21

No.	Index	Name	Unit	Price
4.	PPZW	Perlite chimney block with ventilation 50x36	pcs	9,87
5.	PPZW2W	Perlite chimney block with double ventilation 54x36	pcs	11,72

Accessories Uniwersal Plus

No.	Index	Name	Unit	Price
1.	JRUP160/180S	Bond with rope 160/180m	pcs	26,23
2.	JRUP180/205S	Bond with rope 180/205m	pcs	26,72
3.	JRUP200/225S	Bond with rope 200/225m	pcs	27,21
4.	JRUP250/280S	Bond with rope 250/280m	pcs	40,70
5.	JDWI	Insulated chimney door	pcs	48,80
6.	JUK	Chimney handle- roof support	pcs	21,82
7.	WDPS160	Rain cap with rope 160	pcs	23,53

No.	Index	Name	Unit	Price
8.	WDPS180	Rain cap with rope 180	pcs	25,98
9.	WDPS200	Rain cap with rope 200	pcs	28,68
10.	JST160	End cone 160	pcs	28,75
11.	JST180	End cone 180	pcs	29,51
12.	JST200	End cone 200	pcs	30,77
13.	JST250	End cone 250	pcs	40,50

Accessories Jawar Nord

No.	Index	Name	Unit	Price
1.	JDEKW 160	Locking plug 160 insulated	pcs	21,25
2.	JDEKW 180	Locking plug 180 insulated	pcs	21,74
3.	JDEKW 200	Locking plug 200 insulated	pcs	22,25
4.	JDWI	Insulated chimney door	pcs	48,80
5.	JRUP 160/180S	Bond with rope 160/180	pcs	26,23
6.	JRUP 180/205S	Bond with rope 180/205	pcs	26,72
7.	JRUP 200/225S	Bond with rope 250/280m	pcs	27,21
8.	JODS 140/160	Condensate tray 140/160	pcs	14,12
9.	JODS 180/200	Condensate tray 180/200	pcs	14,12
10.	JPMN 160	Installation package Nord 160	pcs	175,58
11.	JPMN 180	Installation package Nord 180	pcs	177,30
12.	JPMN 200	Installation package Nord 200	pcs	179,50
13.	JPCUP	Frontplate 160-200	pcs	2,86
14.	KLEJ2	Pipe glue 2 kg	pcs	10,00
15.	CPL 140/160	Cover plate 140-160	pcs	25,50
16.	CPLW 140/160	Cover plate 140-160+W	pcs	31,13
17.	CPL 180/200	Cover plate 180-200	pcs	25,50
18.	CPLW 180/200	Cover plate 180-200+W	pcs	31,13

No.	Index	Name	Unit	Price
19.	CPL2W 160	Cover plate 160+2W	pcs	33,10
20.	CPL2W 180/200	Cover plate 180-200+2W	pcs	33,10
21.	JNPP	Air connection	pcs	10,78
22.	JRN 160 0,66	Insulated pipe Nord 160	pcs	33,10
23.	JRN 180 0,66	Insulated pipe Nord 180	pcs	34,81
24.	JRN 200 0,66	Insulated pipe Nord 200	pcs	36,78
25.	CSZABLON	Mortar template 160-200	pcs	3,74
26.	JSC 160	Ceramic cone 160	pcs	23,78
27.	JSC 180	Ceramic cone 180	pcs	24,02
28.	JSC 200	Ceramic cone 200	pcs	24,27
29.	JTN200 45 0,33	Insulated T-Pipe Nord 20 45 0,33m	pcs	64,73
30.	JTN160 90 0,33	Insulated T-Pipe Nord 16 90 0,33m	pcs	31,63
31.	JTN180 90 0,33	Insulated T-Pipe Nord 18 90 0,33m	pcs	34,57
32.	JTN200 90 0,33	Insulated T-Pipe Nord 20 90 0,33m	pcs	37,51
33.	WDPS 160	Rain cap with rope 160	pcs	23,53
34.	WDPS 180	Rain cap with rope 180	pcs	25,98
35.	WDPS 200	Rain cap with rope 200	pcs	28,68
36.	CKWS	Air check SPS	pcs	8,57

Perlite block 33cm

No.	Index	Name	Unit	Price
1.	PPBW	Perlite chimney block 36x36	pcs	7,10
2.	PPBWN	Perlite chimney block 40x40	pcs	9,31
3.	PPBW2C	Perlite chimney block 68x36 (double channel)	pcs	14,21

No.	Index	Name	Unit	Price
4.	PPZWN	Perlite chimney block with ventilation 50x40	pcs	11,64
5.	PPZ2W	Perlite chimney block with double ventilation 54x36	pcs	11,72
6.	PPZW	Perlite chimney block with ventilation 50x36	pcs	9,87

Accessories Jawar K

No.	Index	Name	Unit	Price
1.	JDEK 8	Locking plug 8	pcs	22,92
2.	JDEK 120	Locking plug 12	pcs	24,02
3.	JDWK	Insulated chimney door Jawar K	pcs	21,82
4.	JKP	Bottom cover	pcs	6,85
5.	JM 80	Gas membrane 80/60	pcs	6,85
6.	JM 100	Gas membrane 100/80	pcs	9,80
7.	JM 120	Gas membrane 120/100	pcs	10,90
8.	JCO 80	Stabiliser 80	pcs	6,37
9.	JCO 120	Stabiliser 120	pcs	6,62
10.	JOD 80	Condensate tray 80	pcs	12,25
11.	JOD 120	Condensate tray 120	pcs	13,85
12.	JPMJK 80	Installation package Jawar K 80	pcs	145,17
13.	JPMJKK 80	Installation package Jawar K 80	pcs	152,77
14.	JPMJK 120	Installation package Jawar K 120	pcs	153,76
15.	JPPK	Air connection Jawar K	pcs	25,01
16.	JPL 8	Cover plate 80	pcs	22,13
17.	JPLW 8	Cover plate 80+W	pcs	26,97
18.	JPL 12	Cover plate 120	pcs	25,00
19.	JPLW 12	Cover plate 120+W	pcs	30,40
20.	JPL2W 12	Cover plate 120+2W	pcs	32,37
21.	JST 80	End cone 80	pcs	23,42
22.	JST120	End cone 120	pcs	24,80
23.	JSZK	Mortar template Jawar K	pcs	2,69

No.	Index	Name	Unit	Price
24.	JAK080	adapterJawar K 80	pcs	20,91
25.	JPPK080KO	Air connectionJawar K 80	pcs	25,01
26.	JKRZ080/098	ReducerJawar K 80	pcs	26,78
27.	JK80 95 0,25	Isostatic elbow 80 95 0,25	pcs	38,99
28.	JR80 0,66	Isostatic pipe 80 0,66m	pcs	13,03
29.	JR120 0,66	Isostatic pipe 120 0,66m	pcs	13,58
30.	JSK	Silicone Jawar K 310ml	pcs	8,30
31.	JT 80 90 0,33	Isostatic T-Pipe 80 90 0,33m	pcs	17,28
32.	JT 120 90 0,33	Isostatic T-Pipe120 90 0,33m	pcs	18,64
33.	WBKD	Bottom chimney plate	pcs	7,72
34.	WBKG	Upper chimney plate	pcs	10,30
35.	JW80	Tool for smoothing joints 80	pcs	3,42
36.	JW120	Tool for smoothing joints 120	pcs	3,67
37.	PPIW	Chimney block for ø80 (20x24)	pcs	2,68
38.	PP2W	Chimney block for ø80 (36x24)	pcs	5,38
39.	PP3W	Chimney block for ø80 (52x24)	pcs	8,08
40.	PP4W	Chimney block for ø80 (68x24)	pcs	10,78
41.	PPBW	Chimney block for ø120 (36x36)	pcs	7,10
42.	PPZW	Chimney block for ø120 (50x36)	pcs	9,87
43.	PPZ2W	Chimney block for ø120 (54x36)	pcs	11,72
44.	JPW8	Support plate Jawar K 80	pcs	33,10
45.	CPW	Support plate (Jawar K 120)	pcs	38,25
46.	CKW13x17	Air check 13x17	pcs	2,68

Accessories Jawar Kompakt

No.	Index	Name	Unit	Price
1.	JDEKW160	Locking plug 160 insulated	pcs	20,64
2.	JDEKS160	Locking plug 160 with rope	pcs	24,76
3.	JDEKW180	Locking plug 180 insulated	pcs	21,11
4.	JDEKS180	Locking plug 180 with rope	pcs	25,23
5.	JDEKW200	Locking plug 200 insulated	pcs	21,61
6.	JDEKS200	Locking plug 200 with rope	pcs	25,85
7.	JDW	Jawar door	pcs	17,73
8.	CKW 13x17	Air check 13x17	pcs	2,66
9.	JCKW	Ventilation check	pcs	5,09
10.	KLEJ2	Pipe glue 2 kg	pcs	9,71
11.	JODS 140/160	Condensate tray 140/160	pcs	13,71
12.	JODS 180/200	Condensate tray 180/200	pcs	13,71
13.	JOLP 160	Insulation Uniwersal Plus 160 0,33m	pcs	4,35
14.	JOLP 180	Insulation Uniwersal Plus 180 0,33m	pcs	4,50
15.	JOLP 200	Insulation Uniwersal Plus 200 0,33m	pcs	4,61
16.	JPUPP 160	Installation Uniwersal Plus 160	pcs	59,52
17.	JPUPP 180	Installation Uniwersal Plus 180	pcs	60,71
18.	JPUPP 200	Installation Uniwersal Plus 200	pcs	61,90
19.	JPMK	Installation Jawar Kompakt	pcs	86,30
20.	JPCUP	Frontplate 160-200	pcs	2,78
21.	JSC 160	Ceramic cone 160	pcs	23,09

No.	Index	Name	Unit	Price
22.	JSC 180	Ceramic cone 180	pcs	23,33
23.	JSC 200	Ceramic cone 200	pcs	23,57
24.	JR 160 0,66	Isostatic pipe Jawar 160 0,66m	pcs	15,28
25.	JR 180 0,66	Isostatic pipe Jawar 180 0,66m	pcs	15,73
26.	JR 200 0,66	Isostatic pipe Jawar 200 0,66m	pcs	16,42
27.	JT 160 90 0,33	Isostatic T-Pipe Jawar 160 90 0,33m	pcs	19,00
28.	JT 180 90 0,33	Isostatic T-Pipe Jawar 180 90 0,33m	pcs	20,30
29.	JT 200 90 0,33	Isostatic T-Pipe Jawar 200 90 0,33m	pcs	21,76
30.	JT 200 45 0,33	Isostatic T-Pipe Jawar 200 45 0,33m	pcs	48,80
31.	CSZABLON	Mortar template 160-20	pcs	3,64
32.	KR080 0,50	Steel pipe 0,80 0,50m	pcs	12,73
33.	KR080 1,00	Steel pipe 0,80 1,00m	pcs	17,85
34.	WBKG080	Upper chimney sheet 80mm	pcs	10,00
35.	WS080	Stabiliser 080	pcs	3,76
36.	JPPK	Air connection Jawar K	pcs	24,28
37.	WBKD	Bottom chimney sheet	pcs	7,50
38.	WEZYK2M	Hose line 2m	pcs	2,54
39.	KK080 90 PODP	Condensation elbow with a support 80/90	pcs	34,52
40.	JDWK	Insulated chimney door Jawar K	pcs	21,19
41.	PP2W	Chimney block 54x36	pcs	11,38
42.	IKPK080	Rain falange	pcs	10,00

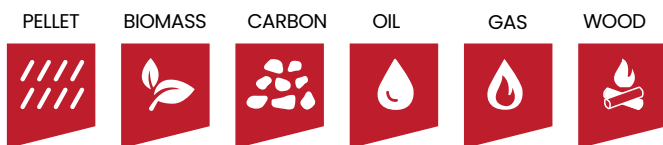
Accessories Jawar KS

No.	Index	Name	Unit	Price
1.	PP1W	Chimney block for ø80 (20x24)	pcs	2,61
2.	PP2W	Chimney block for ø80 (36x24)	pcs	5,23
3.	PP3W	Chimney block for ø80 (52x24)	pcs	7,85
4.	PP4W	Chimney block for ø80 (68x24)	pcs	10,47
5.	KR0 80 1,00	Steel pipe 080 1,00m	pcs	17,85
6.	KR 080 0,50	Steel pipe 080 0,50m	pcs	12,73
7.	KTW080	T-pipe with inspection unit 080	pcs	22,61
8.	KK080 90 PODP	Condensation elbow with support 90/80mm	pcs	34,52

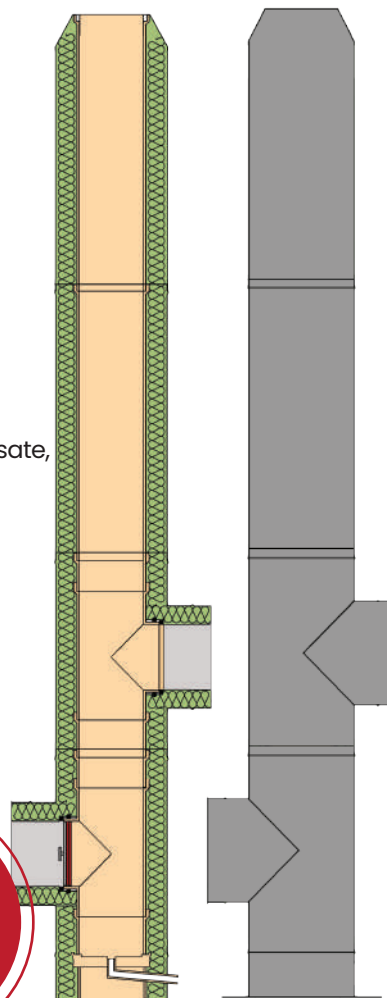
No.	Index	Name	Unit	Price
9.	WBKG080	Upper chimney sheet 80mm	pcs	10,00
10.	WS080	Stabiliser 080	pcs	3,76
11.	CKW13x17	Air check 13x17	pcs	2,66
12.	JPPK	Air connection Jawar K	pcs	24,28
13.	WBKD	Bottom chimney sheet (80-100mm)	pcs	7,50
14.	WEZYK2M	Hose line 2m	pcs	2,50
15.	JDWK	Insulated chimney door Jawar K	pcs	21,19
16.	IKPK 080	Rain falange	pcs	10,00

Jawar Cerastal

Ceramic-steel chimney system designed to exhaust gases from all types of heating devices.



- Designed to exhaust gases in range of temperatures 60-600°C
- Insulated on full length of chimney
- Resistant to corrosion isostatic ceramics - high resistance to condensate, possible to use with coal and pellets
- Low weight of the chimney - possible to build on wall supports - without foundation
- Easy and fast installation
- ø 12, 16, 18, 20, 25
- Chimney system marked with CE according to standards
EN 13063-1 T600 NI D 3 G50
EN 13063-2 T 400 NI W 3 O00



The total height of the chimney

dimensions [cm]	4,90	5,54	6,18	6,82	7,46	8,10	8,74	9,38	10,02	10,66	11,30	11,94
	EUR	EUR	EUR	EUR	EUR	EUR	EUR	EUR	EUR	EUR	EUR	PLN
12	721	787	875	962	1027	1115	1191	1278	1344	1431	1497	1585
14	777	849	942	1036	1107	1200	1282	1376	1447	1540	1612	1705
16	850	929	1031	1134	1212	1314	1402	1504	1583	1686	1764	1866
18	992	1015	1127	1241	1327	1440	1537	1650	1736	1849	1936	2049
20	1005	1100	1220	1341	1435	1556	1660	1781	1875	1996	2090	2251
25	* individual pricing											

The price includes:



pipe



tee



inspection pipe



mouth ending



condensate tray



strengthened wall spacer



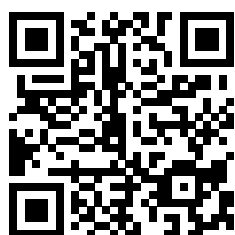
band clip strengthened



locking bar strengthened

Accessories Jawar Cerastal

No.	INDEX	Name	120/250mm	140/250mm	160/280mm	180/300mm	200/325mm	250/400mm
1.	CER	Pipe 0,66	53,20	59,10	63,50	68,42	70,14	81,66
2.	CET	T-Pipe 90 0,50m	76,75	89,75	94,17	101,52	111,09	
3.	CET250	T-Pipe 90 0,66m						129,72
4.	CEW	Inspection pipe 0,50m	89,75	97,60	107,17	114,52	124,33	
5.	CEW250	Inspection pipe 0,66m						144,93
6.	CEO B	Condensate tray with side pipe	39,47	42,90	45,85	48,55	51,25	57,87
7.	CEO	Condensate tray with side pipe	39,47	42,90	45,85	48,55	51,25	57,87
8.	CEU	Mouth ending 0,66	68,42	73,32	81,90	85,34	90,49	112,80
9.	IOZWN	Band clip strenghtened	12,75	12,75	14,95	18,64	24,27	31,87
10.	IOW	Band clip strenghtened h= 200	39,87	37,41	41,93	45,37	45,61	46,84
11.	IOSW	Strenghtened wall spacer	21,33	21,33	23,79	25,50	26,24	28,69
12.	IWSO 50-125	Wall spacer brackets 50-125mm	12,75					
13.	IWSO 125-200	Wall spacer brackets 125-200mm	15,45					
14.	IWSO 200-275	Wall spacer brackets 200-275mm	18,39					
15.	IWSO 275-350	Wall spacer brackets 275,350mm	21,33					
16.	IKPN	Rain flange	14,47	14,47	16,18	20,84	21,57	26,24
17.	IEND	End cap	24,02	25,01	26,24	27,98	29,17	36,63
18.	IPD 0-5	Roof duct 0-5	55,42	55,42	60,32	62,77	65,72	75,04
19.	IPD 5-20	Roof duct 5-20	60,32	60,32	68,17	72,83	80,19	79,20
20.	IPD 20-35	Roof duct 20-35	69,64	69,64	69,64	77,00	91,22	87,55
21.	IPD 35-50	Roof duct 35-50	87,05	87,05	89,25	91,22	94,90	113,30
22.	KLEJ2	Pipe glue 2 kg	9,80					
23.	IWSP II	Base plate II brackets	15,69					
24.	IWSP III	Base plate III brackets	23,54					
25.	IWSP IV	Base plate IV brackets	33,59					
26.	IWSP V	Base plate V brackets	53,20					



Jawar Sp. z o.o
Sońska 89
06-400 Ciechanów, Poland
+48 (023) 672 24 16, 673 54 00
E-mail: handel@jawar.com.pl
www.jawar.com.pl

Perlite Production Factory Jawar
Zygmuntowo 1c
06-450 Głinojeck
Poland